

Lower Gwynedd Report



MESSAGE FROM THE BOARD OF SUPERVISORS



Mr. Paccione is currently serving his 5th year as Supervisor. He and his family have lived in Lower Gwynedd for 10 years.

In the Spring Newsletter I reported that the revitalization of the Spring House Village Center which will include a Whole Foods Market, a CVS, a relocated and enlarged Arpeggio's and Starbucks would be opening in late 2016. I am pleased to report that this project is on schedule. The Board of Supervisors granted plan approval on July 28, 2015. Construction is scheduled to start this fall dependent upon Stoltz Management obtaining the necessary approvals from State agencies.

While most of Lower Gwynedd Township is developed, there are two large parcels that are mostly vacant. They are the former DOW site on Norristown Road and the Merck property on Sumneytown Pike. The development of these properties to their maximum potential will have a major impact on the Township. Rather than wait for developers to approach the Township and then react, the Township is taking a pro-active approach. The Board has hired Barton Partners, a multi-disciplinary planning organization, to study these properties. The goal is to develop realistic land use regulations for these parcels that will be sustainable and

will maintain the high quality of life that makes Lower Gwynedd a special place.

The Board of Supervisors highest priority is to keep those who live, work and play in Lower Gwynedd safe. The Board welcomed two new police officers to the police force on April 14, 2015. Officers Michael Cantrell and Chris Swenson join our superb department that now has eighteen sworn officers.

You will be hearing more in the coming months about the Township's requirements under the Clean Water Act to improve the water quality of the Wissahickon Creek. This is an unfunded mandate from Federal and State government agencies. The Township is working closely with other municipalities to meet our common goal of improving water quality in the Wissahickon Creek without placing an undue burden on our taxpayers.

The Board of Supervisors encourages your comments and suggestions via e-mail (supervisors@lowergwynedd.org), by written correspondence or by simply picking up the phone and calling the Township Building at 215-646-5302.

Stephen Paccione, Chairman, Board of Supervisors

2015 FALL LEAF COLLECTION DATES FOR WASTE MANAGEMENT CUSTOMERS

- October 24
- November 14
- December 5

All leaves shall be placed in biodegradable bags and placed curbside by 7:00 AM of the collection date but no earlier than 7:00 PM the prior day.

INDEX

Community Ambulance Association of Ambler	3
Lower Gwynedd Business Association.....	3
Township Directory	4
No Open Burning	5
Nominate Citizen of the Year	5
Lower Gwynedd Township Police.....	6
Tips From The Public Works Department.....	7
Ways to Stay Green When the Leaves are Changing	8
Gwynedd Green Grass	8
Parks and Recreation	9-11

1130 N. Bethlehem Pike
 P.O. Box 625
 Spring House, PA 19477
 Phone: 215-646-5302
 Fax: 215-646-3357
www.lowergwynedd.org

- Pharmacy staff dedicated to your health and wellness

- We accept most Medicare Part D Plans

- Courteous service by people who know your name



215-646-1691

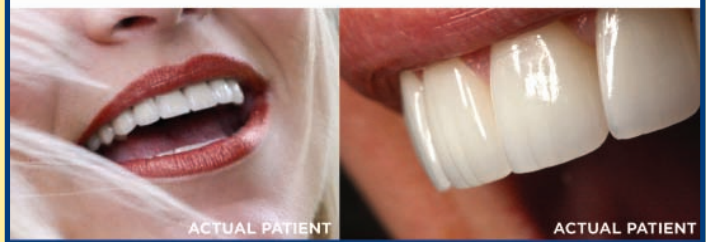


1121 N. Bethlehem Pike
Spring House, PA 19477
www.villagepharmacyatspringhouse.com



Family Owned and Operated Since 1992

REAL PATIENTS. REAL SMILES.



STELZERDENTAL
AESTHETIC AND GENERAL DENTISTRY

COMPREHENSIVE COSMETIC FUNCTIONAL AESTHETIC

(215) 646-5777



Before After

VENEERS SMILE DESIGN WHITENING CROWNS BONDING IMPLANTS INVISALIGN

www.STELZERDENTAL.com

1108 N. Bethlehem Pike, Suite 2, Lower Gwynedd, PA 19002

Arpeggio
Restaurant

www.ArpeggioBYOB.com



215.646.5055

909 Sunnyside Pike
Spring House, PA 19477

Wellness for Life.



Lower Gwynedd Residents:
Call Now! Learn more about your special offer!

Fitness For 50+

Enjoy the many benefits of our comfortable, relaxed atmosphere for adults only.

- Heated Therapeutic Pool
- Fully Equipped Fitness Center
- Land and Water Classes
- Nutritional Counseling
- And more!



Come in for a tour!
Call Kelly at 215-283-2404
www.becomingcenter.org

250 N. Bethlehem Pike
Ambler, PA 19002



Shaeff-Myers Funeral Home

215-646-0595



Family Owned and Operated
Traditional and Cremation Services

Richard E Myers, FD ~ Robert E Myers, Supervisor
145 Tennis Ave ♦ Ambler, PA 19002
Shaeff-Myers.com



@LowerGwyneddPA



find our page on Facebook at "Lower Gwynedd Township"

COMMUNITY AMBULANCE ASSOCIATION OF AMBLER Fund Development Events

Save the dates:

October 30 - Art Auction (live and silent) at our station(1414 E. Butler Pike, Ambler). Preview 7:00PM Auction 8:00PM Call 215-643-6517 Ext. 200 for tickets(\$15.00 single,\$25.00 couple).

December 19 - Coin Drop (usual location at Bethlehem and Sunnyside in LG Twp.) 9:00AM-1:00PM



Community Ambulance Association of Ambler announces that its entire fleet of ambulances is now equipped with Lucas chest compression devices. The Lucas devices are portable, easy to use devices that deliver automated chest compressions to improve blood flow in victims of cardiac arrest. Performing at least 100 compressions per minute, the chest compressors can be deployed quickly with minimal interruption to patient care.



At Right: Kathleen Hunsicker, Vice-Chair Lower Gwynedd Board of Supervisors, with Fred Connor, Chairman of Whitpain Board of Supervisors and Beth Pilling, Montgomery County Planning Commission discussing joint walking trail project in June.

Welcome to the Lower Gwynedd Business Association

www.LowerGwynedd.biz

In a world where companies can find answers to their problems with a click of a button, Lower Gwynedd businesses needed to be able to communicate and share information that quickly as well. As a result, the Lower Gwynedd Business Association (LGBA) developed a plan to create an informative and interactive new website. It expands marketing efforts for both the Association and its members and serves as an information hub for the people of the community.



Calendar of Events

A great, local way to lunch, learn, meet and mingle.


[Click for more](#)



Member Directory

Browse the local, first rate businesses that make Lower Gwynedd a destination for shopping and dining.

[Click for more](#)



Special Offers

Save while you shop, dine and play in Lower Gwynedd, with discounts and special offers from your favorite Lower Gwynedd retailers, restaurants, attractions, and more.

[Click for more](#)

Utilizing the services of one of its members, the LGBA senior leadership worked with the marketing company, Inertia: Design + Marketing, to create their website. It became the new home for the digital LGBA. Many impressive features were included on the site in order to aid each member of this growing organization. The goal is to raise awareness of the local businesses and engage with local residents.

Residents and consumers will be able to use the site to search for upcoming events like the annual Shop & Dine that will take place from Nov. 9th – 14th as well as the Mattie Dixon Food Drive in February. The goal of the new site is to keep the local business owners connected with the local residents. For more information, visit the new site at www.LowerGwynedd.biz.

LOWER GWYNEDD TOWNSHIP

1130 N. Bethlehem Pike • P. O. Box 625 • Spring House, PA 19477 • www.lowergwynedd.org

Administration: Phone: (215) 646-5302 Fax: (215) 646-3357 **Police:** Emergency: 911 Phone: (215) 646-5303

Board of Supervisors

Stephen J. Paccione, Chairman
 Kathleen Hunsicker, Vice Chair
 Edward J. Brandt
 Dr. J. Richard Booth
 Mark G. Grey

Township Manager: Larry M. Comunale
Assistant Manager: Craig McAnally
Asst. Sec.: Carole Culbreth
Finance Director: Karen Yeutter
Police Chief: Paul Kenny
Solicitor: James J. Garrity, Esq.
Engineer: David W. Connell, P.E., CKS Eng.
Public Works Director: Michael DeStefano
Zoning Officer: Joseph A. Zadlo
Asst. Zoning Officer: Craig McAnally
Building Inspector: Joseph Groarke
Real Estate Tax Collector: Betty Lou Yost
E.I.T.; B.P.; Merc. & LST Collection:
 Berkheimer Associates
Recreation Director: Sandi L. Feight
Parks Superintendent: Chris Kalb
Fire Marshal: Al Comly

LOWER GWYNEDD TOWNSHIP 2015 FALL MEETING SCHEDULE

All meetings to be held in the Administrative Office at
 1130 North Bethlehem Pike, Spring House

	BOARD OF SUPERVISORS (7:30 PM)	ZONING HEARING BOARD (7:30 PM)	PLANNING COMMISSION (7:00 PM)	PARK AND RECREATION (6:00 PM)	MUNICIPAL AUTHORITY (7:30 PM)	GWYNEED GREEN
SEPT	22	10	16	29	9	16
OCT	13 and 27	8	21	27	14	21
NOV	10 and 24	12	18	24	12	18
DEC	8	10	16	NA	9	16

Deadline for Submissions:

Zoning Hearing Board
 30 days prior to scheduled meeting

Planning Commission
 last day of month prior to scheduled meeting

TOWNSHIP HOLIDAYS are as follows:

October 12 (Columbus Day)
 November 11 (Veterans Day)
 November 26 & 27 (Thanksgiving)
 December 25 (Christmas)

General Election Day:
Tuesday, November 3, 2015



Left to Right: Supervisors Mark Grey, Kathleen Hunsicker, Edward Brandt and Police Chief Paul Kenny participating in the Wissahickon Faith Community Association organized Solidarity March and Healing Service on June 24, 2015 in response to the tragic Charleston, S.C. shooting.

KEEP ON RECYCLING!

At Right: Ed Brandt, President of the Northern Montgomery Recycling Commission presents a check to Mark Grey, Chair of the Township's Gwynedd Green Committee and Township Manager, Larry Comunale in the amount of \$33,745.95. The Township receives these funds from the Commission for the recycling efforts of its citizens.



NO OPEN BURNING IN LOWER GWYNEDD TOWNSHIP



Residents are reminded that, effective April 14, 2015, open burning is not allowed in Lower Gwynedd Township. This prohibition applies to any burning of leaves, sticks, branches, trash or any similar material.

Use of commercially available devices like chimneas, BBQ grills, and other portable outdoor fireplaces is permitted. Constructed fireplaces, BBQ grills and similar site fabricated items must be submitted for review to the Township prior to construction.

The Fire Code allows bonfires and recreational fires if approved in advance by the Township. Written requests for such one-time events must be submitted at least one week in advance.

Lower Gwynedd Police Benevolent Association

ANNUAL GOLF OUTING

Monday, October 19, 2015 at Old York Road Country Club

Questions: (215) 646- 5303 ext. 348 or BRyan@lowergwynedd.org
Old York Road Country Club is located 801 Tennis Ave. Springhouse, PA 19477
**Old York Rd. requires soft spikes and collared shirts, no jeans please.



ABOVE: Left to Right: Josh Shapiro, Montgomery County Commissioner, Mrs. Tanya Quann, Reverend Charles Quann, and Supervisor, Kathleen Hunsicker at the annual Martin Luther King Celebration at Bethlehem Baptist Church.

OPENING SOON!!

Spring registration for Lower Gwynedd Little League (baseball and softball) ages 4 to 16. Please visit our web site for more details: lgbaseball.com



Thank You To The Businesses!

This publication is made possible at no cost to the residents of Lower Gwynedd Township through the generous advertising sponsorship of the businesses listed throughout our newsletter. We wish to encourage your patronage of these establishments. They are a very important to the economic vitality of our community.

Nominate Citizen of the Year

Do you know someone who has served Lower Gwynedd so well that you think he or she should be Lower Gwynedd's 2015 Citizen of the Year? Last year, Hank Stoebenau was chosen to receive this honor. A special selection committee will review residents' nominations and name this year's Citizen of the Year.

To make a nomination, write a one-to-two page letter describing how your nominee demonstrates a commitment to improving the quality of life in the Township. Send your nomination by October 6, 2015 to:

Carole B. Culbreth

Lower Gwynedd Township, P. O. Box 625, Spring House, PA 19477

cculbreth@lowergwynedd.org, fax: 215.646.3357

Please remember to include your name and contact information. The recipient will be announced at the annual Volunteer Appreciation Banquet on November 19, 2015, and will be featured in the next issue of the Lower Gwynedd Report.

LOWER GWYNEDD TOWNSHIP POLICE

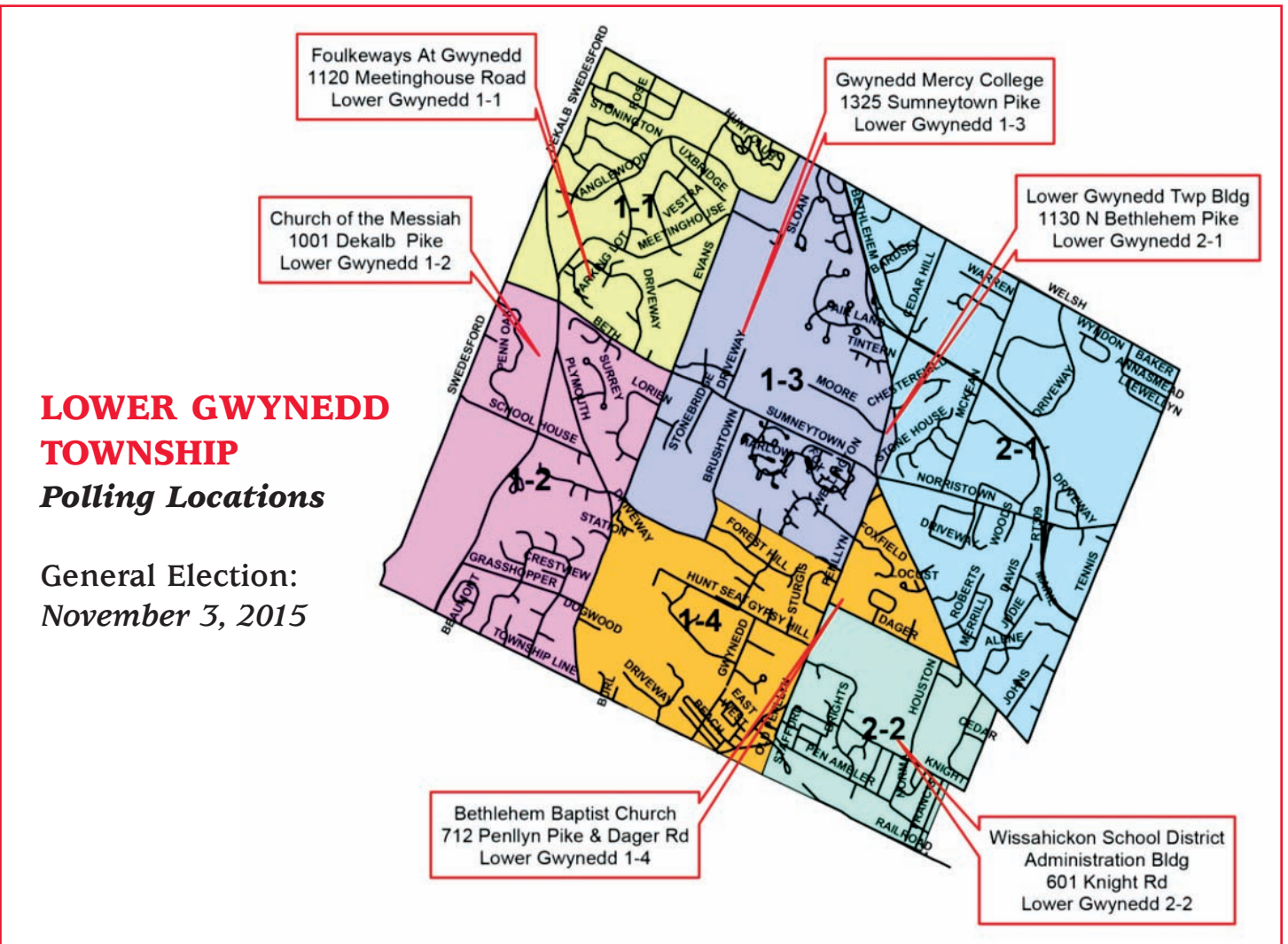


Michael Cantrell (*left in photo*), 26, originally from King of Prussia was hired with Lower Gwynedd Police 4/6/15. He attended Shippensburg University where he majored in Criminal Justice, then attended the Montgomery County Community College Police Academy. Mike lives in Conshohocken with his longtime girlfriend, Adrienne. He wanted to work for Lower Gwynedd because their reputation focuses

on community relations. In his spare time, Mike enjoys physical fitness and is a weight lifting fanatic. He enjoys movies on the weekends and adores his dog, a beagle named Toby. His aspirations for his career are limitless. He looks forward to joining up with multi-agency organizations to meet as many people as he can. Mike is very excited to be part of the Lower Gwynedd Family.



Chris Swenson (*right in photo*), 24, originally from Bensalem was hired with Lower Gwynedd Police on 4/6/15. He attended Bucks County Community College where he majored in Correctional Administration. Following that he attended Temple University's Police Academy. He wanted to work for Lower Gwynedd because he has had long standing family ties here, including great childhood memories. In his spare time, Chris is a landscaper, and an avid volleyball player. Chris has aspirations of a long, healthy, successful career.



Traffic Relief May Be On The Way!

Lower Gwynedd Township recently applied for a \$3 million Multi-Modal Transportation Grant to improve the Spring House intersection. If this grant is approved Summeytown Pike and Norristown Road will be widened to allow for additional through lanes. The Township has committed \$1.2 million toward this project which will reduce traffic delays at the Township's traffic hub. These planned improvements will complement the technology upgrades at the major intersections in Spring House scheduled to occur this fall.



TIPS FROM THE PUBLIC WORKS DEPARTMENT

- **MAILBOXES** – Mailboxes should be installed in accordance to U.S. Postal Standards. Mailboxes that are not installed in accordance to US Postal Standards and are struck by a Township plow during snow removal operations will be sole responsibility of the property owner to repair.
- **LEAVES** – Leaves that are not bagged should not be placed in Township roadways. Leaves that are placed in the street can become a traffic hazard, block storm inlets and pipes which can create result in flooding in poor drainage areas. Please check the Townships website for when the Township Waste Management Company will be picking up leaves that are placed in biodegradable bags and placed curb side.
- **LANDSCAPING** – Landscaping adjacent to Township roadways shall be maintained to allow safe passage of residents and motor vehicles. Landscaping that protrudes out into the roadway and does not meet the minimum height requirement is considered a safety hazard. The Public Works Department recommends that all landscaping be maintained a minimum of 12 inches behind the edge of roadway or curb line and to a maximum height of 13 feet.
- **SNOW REMOVAL** – During winter snow or ice events the Public Works Department requests that residents keep the roadways adjacent to their property clear of any obstructions. Vehicles and trash receptacles are considered an obstruction and prohibit the Township from properly clearing the roadway. Plowing or throwing snow out into Township Streets is strictly prohibited.



VETERANS SHUTTLE SERVICES

Montgomery County has partnered with the VA Medical Centers in Coatesville, Spring City, and Horsham to provide ride services for Montgomery County veteran residents and their caretakers. Veterans who wish to ride the shuttle must be actively enrolled in the VA Health Care system to use the program. If you would like assistance enrolling in VA Healthcare, filing a claim for VA benefits, or have questions about eligibility for VA program, please contact your County VA office at 610-278-3285 and ask to speak with a Service Officer.



AT LEFT: U.S. Air Force Flying Crew Chief Richard Ushka, speaks to the crowd gathered at the Veterans Day Ceremony at Veterans Memorial Park in Lower Gwynedd on November 8, 2014. Seated left to right are U.S. Army Capt. Aaron Watkins; U.S. Navy Rear Admiral Stephen Yusem; Lower Gwynedd Township Supervisors Dr. J. Richard Booth, Stephen Paccione, Kathleen Hunsicker, Mark Grey, and Edward Brandt.

THE 2015 VETERANS DAY CEREMONY IS SCHEDULED FOR NOVEMBER 7TH AT VETERANS MEMORIAL PARK, BETHLEHEM AND PENLLYN PIKES.

Ways to Stay Green When the Leaves are Changing

Ideas for preparing for winter in an environmentally friendly way

Fall is the time of year when school starts back up and the leaves begin to fall. As you are working outside and enjoying the cooler weather, remember these tips to protect our environment and water.

HARVEST FALLEN LEAVES

- There are many sources of stormwater pollution unique to autumn, and we need your help to control them. The leaves are falling, and their improper disposal poses a threat to our water resources. Leaf litter and any yard waste dumped into a stormwater basin or near a waterway can cause harmful nutrient accumulation. Leaves swept into the street can easily enter storm drains and make their way into the nearest creek as well.
- Dispose of leaf litter and yard waste in a compost pile and never in the street or stream! You can shred yard and leaf waste to use as mulch or fertilizer for your yard and garden.



AERATE AND OVERSEED YOUR LAWN

- Aerating your lawn is an important, yet commonly overlooked, lawn maintenance task. Aeration involves perforating the soil with small holes to allow air, water and nutrients to penetrate the grass roots. This helps the roots grow deeply and produce a stronger, more vigorous lawn. It also reduces soil compaction and restores your lawns natural draining ability resulting in less runoff to our streams.
- The practice of overseeding lawns is really nothing more than spreading grass seed over an existing lawn. Particular attention should be paid to bare areas. With fall germination, the young grass will have two or three months to become better established before temperatures drop too low and growth stops. Next spring, the young plants will have another few months to develop deeper roots before the summer heat sets in. A full, healthy lawn helps to prevent erosion and also reduces runoff.

A little extra caution while you keep up with your fall to-do list can make a big difference for the health of our environment, and we thank you for cooperating with this effort. **To report an illicit discharge to the stormwater collection system, stream, creek or river, please call 215-646-5302.**

Gwynedd Green Grass

Jeffrey Fehlenberg, member, Lower Gwynedd Green Committee

I saw four ruby-throated hummingbirds over the weekend, several tiger swallowtails, cabbage whites, sulphurs and maybe a monarch (butterflies). I am not sure about that last one. It could have been a painted lady. I didn't have to go far to see them. I just stepped outside my house in Lower Gwynedd.

Even though the landscape has changed much and farming is no longer the mainstay of Lower Gwynedd, the township is chartered as a farming community, and some farming is indeed still done here. Yet, residents frequently inquire about a grass height ordinance in their pursuit of creating uniform looking neighborhoods which do not typically offer sightings of these species.

The so-called "perfect lawn" is actually not all that perfect. In many instances, it extends from property boundary to property boundary, is uniformly green, weed-free, cut short, preferably in checkerboard fashion, artificially fertilized, rich in grass-supporting nutrients and poisons that kill other plants and earth-dwelling creatures.

The "buzz cut" we know from greens and fairways on golf courses comes at a relatively high price to our pocket books and to the environment. Lawn care costs can reach well into four digits per year even for modestly sized properties, It starts with the price of seeds or roll-out sod, continues with the cost of maintenance, and the constant fight against nature with herbicides and pesticides. Nature does not want to sustain an unnatural grass-only monoculture. However, many homeowners do their level best to support an environmentally unfriendly backyard ecosystem that disregards environmental impacts, clean air, rain water run-off, potable water, healthy waterways, biodiversity, survival of species, etc.

Cut too short, lawn grass requires constant monitoring and maintenance. By establishing any monoculture, we reduce the number of species the land supports. That not only applies to plants but also to mammals, amphibians, reptiles and insects above and below ground, all of which are members of the same food chain - and that includes us.

According to Mike McGrath of international "You Bet Your Garden" radio show fame, lawns should not be cut below three inches. Mike was a guest of the township at a Gwynedd Green event in June of 2012. Cut shorter, grass stresses which increases its need for water and nutrients to grow a sustainable root system and survive.



Female ruby-throated hummingbird

Above photo copyright J. Fehlenberg. Permission for publication in this newsletter was granted.

PARKS AND RECREATION

REGISTRATION

- Preregistration is required for all programs unless otherwise indicated.
- Registrations are accepted at the Township Building or via mail with payment and completed form(s). No phone registrations are accepted.
- Registration forms can be found on the Township Website lowergwynedd.org
- Full payment must accompany each registration for it to be accepted. Registrations are accepted as space permits.

PAYMENTS: We accept cash, checks (please make checks payable to Lower Gwynedd Township), and credit cards. There is a service fee for paying by credit cards. We do not accept debit cards. There will be a \$25 service charge on all returned checks.

REFUNDS: All refunds requested by the registrant that are granted will be charged a \$5 administrative fee. Full refunds will be issued only if the Parks & Recreation Department cancels a program. All discounted tickets sales are final and non-refundable.

CANCELLATION POLICY: Programs are subject to cancellation if there is insufficient enrollment, inclement weather, or other reasonable causes

PHOTO POLICY: The Parks & Recreation Department may take photos of program participants or park visitors. Please be aware that these photos are for Township use only and may appear in future brochures, newsletters, or flyers.



DISCOUNTED TICKETS

The Parks & Recreation Department offers Discounted Ski tickets to area Ski Resorts from December through March. May through September a variety of discounted tickets are available for amusement parks. Tickets can be purchased at the Township Building Monday through Friday 8:00 a.m. – 4:00 p.m. For a complete listing of the tickets available visit the Parks & Recreation page on the Township Website, www.lowergwynedd.org

PHILADELPHIA FLOWER SHOWS TICKETS

Explore America
Will be available after the beginning of the New Year. Flower Show dates this year are from March 5-13, 2016.



Thursday Knitting Group

This group meets at the Penllyn Woods Community Building every Thursday afternoon (except for Holidays) from 1 p.m. – 3 p.m. If you have questions on a pattern, want to learn how to knit or crochet please join us.



Penllyn Woods Community Building

Need a place to have a party, baby shower, bridal shower? Consider using the Penllyn Woods Community Building. For more information about the facility contact Sandi Feight, Recreation Director 215-646-5302.



TECH QUESTION & ANSWER

Special Program Addition
Wednesday November 19
1:00 p.m. – 4:00 p.m.

Lower Gwynedd Township Building



Staff and volunteers will be on location from the Wissahickon Valley Public Library to help you with any questions you have regarding your electronic devices. Devices you can bring: tablet computer (iPad, Droid), e-readers (Kindle, Nook), Smart Phones (iPhone, Droid). Appointments are required for this program. Please call the Blue Bell Library at 215-643-1320 to setup your 30 minute appointment.

Disclaimer: The Library's intent is to help people learn the use of their devices. The library does not assume responsibility for devices that are not working properly and can't fix devices.

For more programs offered by the Wissahickon Valley Public Library please visit their website, wvpl.org

Trail Dusters

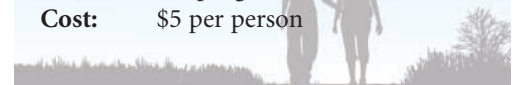
Do you know where all the trails are located in the Township? Have you seen a path but not sure where it goes? Join us as we explore a trail a week. Meetings locations vary each week and upon registering for the program you will receive a list of where the group is meeting.

Dates: Tuesday and Thursdays
September 29 – October 22

Time: 6:00 p.m. – 7:00 p.m.

Location: Varies each week, participants will receive a list of walking locations upon registering for the program.

Cost: \$5 per person



PARKS AND RECREATION



UPPER DUBLIN SPORTS CENTER

TENNIS - FITNESS

680 Tennis Ave
Ambler, PA 19002
215-643-7377

Upper Dublin Racquet Club was established in 1968 as the premium East Coast indoor/outdoor facility. In 2009, we became Upper Dublin Sports Center.

*Instilling the
Love of Tennis*

DATES ALL CLASSES:
Session 1: Tuesdays October 6 - 27
Location: Penllyn Park



FUTURE STARS

(8 and under):

Time: 4-5pm

Cost: \$105 per session per person

Our experienced teaching pro's are very passionate about teaching tennis and getting kids excited about this lifetime sport. Here, the youngest player learn on courts and with equipment "right sized" just for them and that help facilitate quick success and that help facilitate quick success and enjoyment of the game that lasts a lifetime.

ULTIMATE TENNIS

(Ages 9-11):

Time: 5-6pm

Cost: \$105 per session per person

This program is geared towards juniors continuing to improve stroke production with an emphasis on consistency, point play and serves. Our Teaching pro's enjoy sharing their information and passion to ensure a positive learning environment for your child.

ADULT QUICKSTART TENNIS:

Time: 6-7pm

Cost: \$95 per session per person

This is the easiest and most fun way to learn tennis. This program is for people that have never played before or only played a few times before. Let Tuesday nights be your tennis night!

SEWING CLASSES

SEWING BASICS I - Canvas Bag

Learn to sew and have fun while creating an attractive shopping bag. This class is for beginners who are interested in learning to sew and the experience sewer who may need a refresher. Class focuses on sewing machine operations without your need to invest in equipment or materials.

Date: Thursdays: 11/5-11/19
Time: 9:00 - 11:30 a.m.
Location: Penllyn Woods Community Bldg
Ages: Adults
Cost: \$65 per person (\$20 material fee due at the first class)



PURSE WITH BOW CLASS

Make a purse with a magnetic snap closure that is decorated with ribbon, inside pockets and optional key fob. Suitable for students who are comfortable using a sewing machine and buying fabric. First class we'll discuss the materials list for supplies the students need to buy before the second class and we'll go over sewing machine operations. Students are involved in all steps of construction. Leave your machine at home, we provide equipment.

SESSION 1: Thursdays: 9/17 - 10/15, 9:00 a.m.-noon
SESSION 2: Saturdays: 9/19 - 10/17, 9:00 a.m.-noon
Location: Penllyn Woods Community Building
Cost: \$135 per person



SEWING BASICS II 16" Decorative Pillow

If you like the designer pillows in stores but don't like the price, colors, or fabric, then create one that you like! The first week, students learn about which home decorator and utility fabrics, supplies, and embellishments to use.

There will also be a review of machine operations and sewing practice. View various samples and choose the style for your first pillow. Students purchase supplies outside of class between the first and second class. Second and third week instruction concentrate on cutting and sewing. Use of machines and tools provided. Finish project results depend on student selection. Perfect follow up class for those who took Sewing Basics I.

Date: Wednesday Evenings: 10/7-10/21
Time: 6:00 - 8:30 p.m.
Location: Penllyn Woods Community Building
Ages: Adults
Cost: \$65 per person



PARKS AND RECREATION

SEWING CLASSES *continued*

APPLIQUE PILLOW

Learn to create a 20" square pillow with an applique design. Suitable for students who took our basic pillow class or are familiar using a sewing machine and buying fabric. First class we'll discuss the materials list for supplies that the students will need to buy before the second class, we'll practice applique techniques, and review machine operations. In addition to learning applique, student may choose to finish their pillow with hand stitching or a zipper. Leave your machine at home, we provide equipment. Be prepared for visually close work – bring reading glasses if needed.

Dates: Wednesday Evenings: 11/4 - 11/18
Time: 6:00 - 8:30 p.m.
Location: Penllyn Woods Community Building
Cost: \$65 per person



SUMMER CAMP COUNSELORS:

Applications for Summer Camp Counselors are being accepted. All applicants must go through the interview process and complete all necessary background checks. Applicants must be 15 years of age and over.

APPLICATIONS DEADLINE: JANUARY 31, 2016

COUNSELORS IN TRAINING:

The CIT program is designed to train youths ages 13-14 to assist the staff with the activities and programs conducted at the summer camp. There is a \$100 fee to participate in this program – covering program administration and supervision. Successful participation in this program may be a “stepping stone” for future employment with the Parks & Recreation Department. Participants must complete an employment application, go through the interview process and complete all necessary background checks. The fee will be collected if the applicant is chosen to participant.

APPLICATION DEADLINE: JANUARY 31, 2016

Family Bird Walk

Join us as we walk the Treweryn Farms Trail with staff from the Audubon Society. This program is great for beginners and kids (ages 8 and above). In the event of rain the program will be cancelled. Participants are encouraged to bring their own binoculars.

Date: Saturday, November 7, 2015
Time: 7:30 a.m.
Location: Treweryn Farm Trail, located on Sumneytown Pike
Cost: **FREE** however participants must register at the Township Building



Recycle Your Christmas Tree after the Holiday

You can drop off your Christmas tree at Ingersoll Park (Wister Ave and Penllyn Pike) in the parking lot after the holidays. The trees are then chipped and used in the Parks & Trails throughout the Township.

Our annual **Countrie Picnic** is taking a vacation in 2015 and will come back in September 2016 with a **NEW NAME**, a **NEW LOCATION**, **MORE ACTIVITIES**, **MORE FUN**, and a renewed commitment to showcase how special **LOWER GWYNEDD TOWNSHIP REALLY IS!**



Please email sfeight@lowergwynedd.org with your suggestions.

Countrie Picnic Being Rebranded



Bergey's Ford

GRAND OPENING

700 N. Bethlehem Pike, Ambler



Join us in Celebration!

Come see our brand new state-of-the-art facility!

Tours • Food • Give-aways • 1924 Model T on display
Take a test drive around the neighborhood in any new Ford.



OPEN HOUSE: Thursday, October 15 8:00 AM - 9:00 PM



FORD FENCE DAY

**Complimentary fence railings to
replace broken railings on the Pike.**

If you are a business resident that has a broken fence railing along N. Bethlehem Pike (Dager Rd. to Chesterfield Dr.), pick up a replacement railing(s) at Bergey's Ford on Friday, October 16 from 9:00 AM - 5:00 PM or call Kristin at 215-793-3704 to schedule a different pick-up or delivery time.

Thank you for your patience during our year of construction.

BergeysFord.com



215-793-3700



Kate Harper State Representative

61st Legislative District
www.kateharper.net
kharper@pahousegop.com
610-277-3230
1515 DeKalb Pike • Suite 106
Blue Bell, PA 19422
 Follow me on Facebook



LINDA BONFIGLIO REALTOR®

ABR, ALHS, ASP, GREEN, GRI, SRES
Direct 215-817-2991 | Office 215-628-8300
linda@lindabonfiglio.com
www.lindabonfiglio.com

Setting a Higher Standard in Real Estate

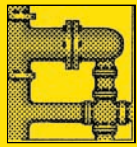
Professional Realtor®
Buying • Selling • Relocation

LINDA BONFIGLIO REALTOR®

ABR, ALHS, ASP, GREEN, GRI, SRES
Serving Lower Gwynedd for over 25 years
Experience Makes The Difference



581 Skippack Pike
Blue Bell, PA 19422



OFFICE: (215) 283-9800
SHOP: (215) 361-1010

SCHNEIDER'S

PLUMBING, HOT WATER HEATERS-HEATING

CHRIS SCHNEIDER
P.O. BOX 362
SPRING HOUSE, PA 19477 USA



Vince Hee ROOFING

215 619-ROOF
(7663)

Roofing excellence
for over 30 years

Lower Gwynedd Resident 114 Poplar Street, Ambler, PA 19002

www.vinceheeroofing.com PA# 011264

Doing what counts.™



Timothy Smith
Branch Relationship Manager
NMLS ID: 748202

800 North Bethlehem Pike, PO Box 856
Spring House, PA 19477

Tel 215.643.6046 | Fax 215.643.6106

Timothy.Smith@susquehanna.net
www.susquehanna.net

Your Community Bank!



Unleash Your Inner Chef



If your kitchen is hampering your culinary creativity, contact us to start a conversation about a renovation: 215.654.0364. (Your inner chef will thank you.)

1021 N. Bethlehem Pike | Spring House, PA | PA #0249 | HarthBuilders.com | (215) 654-0364

Thanks for Voting Us #1



617 N. Bethlehem Pike, Ambler, PA. 19002
215-641-WOOF

🐾 Boarding 🐾 Grooming 🐾 Training 🐾 Daycare

Call for a FREE Training Consultation

www.caninecountry.org

LAND CHIROPRACTIC P.C.

OFFICE HOURS

Mon & Wed
8:30-12 & 2:30-6:30
Tues & Thurs: 2:30-6:30
Friday: 8:30-12 & 2-6
Select Saturdays
by Appointment Only

- Same Day New Patient Appointments
- New & Emergency Patients Welcome
- Most Insurance Accepted
- We Accept Auto Accident & Workers Compensation Cases
- Affordable Cash Prices Available
- Massage Therapy Available
- Gift Certificates Available

TO MAKE AN APPOINTMENT
PLEASE CALL:

215-643-0700

www.LANDCHIROPRACTIC.COM

1000 N. BETHLEHEM PIKE, SPRING HOUSE, PA 19477



921B N. Bethlehem Pike, Suite 301
Lower Gwynedd, PA 19002
(Across the street from Rich's Other Place)

LLC & S-CORP EXPERTS
INDIVIDUAL TAX PREPARATION & PLANNING
10% OFF 2015 TAX RETURNS (New Clients only)

215-393-8221

www.TaxExperts.tax

Nelson & Campbell Auto Tags

Quality Customer Service Since 1992

Full-Service Tag Agency

- Instant Registration • Instant Drivers License Renewals
- Instant Vehicle Title Transfers • Leave With Your Documents

www.NelsonAndCampbellAutoTags.com

215-542-9501

909 Bethlehem Pike Penn Dot
Spring House, PA 19477 Authorized On-Line Agent State & Service
Across From Rich's Other Place Deli Complete Notary Services Fees Apply

Old Village

Master Painters, Ltd.

Ed Stulb

Catering to fine residential homes

Interior/Exterior Painting
Wallpaper Installation
Historical Restorations
Faux and Decorative Finishes

215.540.0196

www.oldvillagemasterpainters.com

SELECT APARTMENTS NOW AVAILABLE



MORE TIME – MORE FRIENDS
MORE CHOICES – LIFE AT FOULKWAYS
Setting Standards of Excellence in Retirement Living Since 1967



1120 Meetinghouse Road
Gwynedd, PA 19436
215-643-2200
www.foulkways.org



Guided by Time-Honored
Quaker Values

BE SERVED NOT JUST SOLD!

Brett Wetherill Dillon,
 REALTOR®, ABR, ASR, ASP & CNE
 BHHS Fox & Roach—Blue Bell
 Philly 5 Star Agent
 215-542-2200 x589 (main office)
 610-212-1362 (mobile)
 brett.dillon@comcast.net (email)



Brett Dillon, a Lifelong Resident of Lower Gwynedd

Brett is excellent at her job! She is honest, hardworking, thoughtful & transparent. Since we were new to the area; we sought a recommendation for a realtor. We were referred to Brett by someone who sat across the table from her in a residential home purchase negotiation. He was thoroughly impressed with her attitude, professionalism and knowledge. He hadn't come across a realtor quite like Brett. It was quickly apparent to us after meeting Brett that we were fortunate to have her working with us! Brett demonstrated tremendous knowledge of the local real estate market, a thoughtful approach to truly understanding our buying needs and combining that information to find a great home for our family. I recommend her to anyone looking for a savvy, good natured and intelligent realtor. *Kevin & Erica Gaffey-Lower Gwynedd*

**NEGOTIATION * COMMUNICATION
 STAGING * MARKETING**



Ambler Beverage Exchange

Largest Cold Case Beer Selection in the Area!

Huge Variety of Specialty, Imported & Domestic Beer
 Available in Cases & Kegs!
 (non-alcoholic beverages, snacks and more...)

267-470-4854
www.amblerbeverage.com
 259 E. Butler Ave. • Ambler, PA 19002

Gwynedd Dental Associates

Caring for you and your smile

The Spa at Gwynedd

Your body deserves more



**NO DENTAL INSURANCE??? NO PROBLEM!
 WE'VE GOT YOU COVERED!!!**

At Gwynedd Dental we care for you, and your smile. That's why we designed our in house insurance plan specifically for you. All you need to participate in our plan is pay a reasonable one time per year annual fee. This grants you access to all of our services at an amazing discount.

We are happy to offer our patients, general, cosmetic and specially dental services for the whole family. Here at Gwynedd, not only do we care for your smile, but we also care for you. Don't forget to visit our medical spa where we can complete your total rejuvenation including dermal fillers and Botox services.

921 North Bethlehem Pike | Spring House, PA 19477 | 215-646-4767 | GIDENTAL1@AOL.COM

EL DOCTOR HABLA ESPANOL

WWW.GWYNEDDDENTALANDSPA.COM

GT AUTOMOTIVE CENTER

161 South Main St, Ambler • www.amblersbestgtauto.com
 Located Conveniently to Railroad Station

215-628-3729

- Complete Car Care • All Makes & Models • Domestic & Imports
- Oil Change Service • Brakes • Tires • Electrical
- Check Engine Light Diagnosis & Repair

Manufacturer's Recommended Mileage Services Performed

**FREE SHUTTLE SERVICE AVAILABLE within the Ambler area
 CAR RENTAL SERVICE ALSO AVAILABLE**

Artistry ~ Creativity ~ Personalization ~

Flowers Silks Gifts

215-628-3550
 1013 N Bethlehem Pike
 (next to First Niagara Bank)
 Lower Gwynedd, PA
valleygreenflowers.com | valleygreenweddings.com

Lower Gwynedd Township
 Spring House, PA 19477
 Phone: 215-646-5302
 Fax: 215-646-3357
 www.lowergwynedd.org

PRSR STD
 US POSTAGE
 PAID
 HARRISBURG PA
 PERMIT NO 609



Volume 20, Number 2 • FALL 2015

hometownpress

This Community Newsletter is produced for Lower Gwynedd Township by Hometown Press • 215.257.1500 • All rights reserved®
 To Place An Ad Call Rose Mary At Hometown Press • 215-805-2121



BE HEALTHY. BE STRONG. BELONG. Ambler Area YMCA

Membership benefits include: FREE Group Exercise Classes, FREE Consultations with a Wellness Coach, FREE Child Watch Services, access to 18 Philadelphia Freedom Valley YMCA locations and much more!



AMBLER AREA YMCA • 1325 McKean Road, Ambler, PA 19002 • 215-628-9950 • philaymca.org

ROOF TROUBLES???



FAMILY ROOFING & SIDING

ROOFS • SHINGLES • SIDING • GUTTERS • WINDOWS

SENIOR CITIZEN
 & AARP
 DISCOUNTS

215-322-8687

www.roofdoc.com

PAHIC 000897

\$500 OFF

Any Complete Roofing
 or Siding Job

C&C FAMILY ROOFING & SIDING

Coupon must be presented at time of estimates.

With this coupon. Not valid with other offers or prior services. Other charges may apply.

215-322-8687

Mention Code "HP" when calling for additional \$50 Discount.

**GUTTER CLEANING
 SPECIAL, ONLY \$125**

- Clean out all gutters & downspouts
- Bag & remove all debris
- Tighten all gutters & downspouts
- Check entire roof, flashings, vent pipes and ridge pipes (up to 100 L.F.)

C&C FAMILY ROOFING & SIDING

With this coupon. Not valid with other offers or prior services. Other charges may apply.

215-322-8687



SPRING HOUSE WINDOW & DOOR

908 North Bethlehem Pike
 Spring House, Pa 19477-0244

215.283.9000

- The area's premier dealer for over 20 years
- We have our own factory trained installers
- We offer a lifetime warranty on installation
- Free "no pressure" in-home estimates



Mention this ad and receive a coupon, worth up to \$500 off your next purchase!
 Valid until December 31, 2015

www.GoSpringHouse.com

PA LIC# 6172

