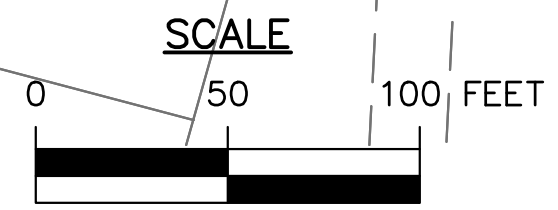
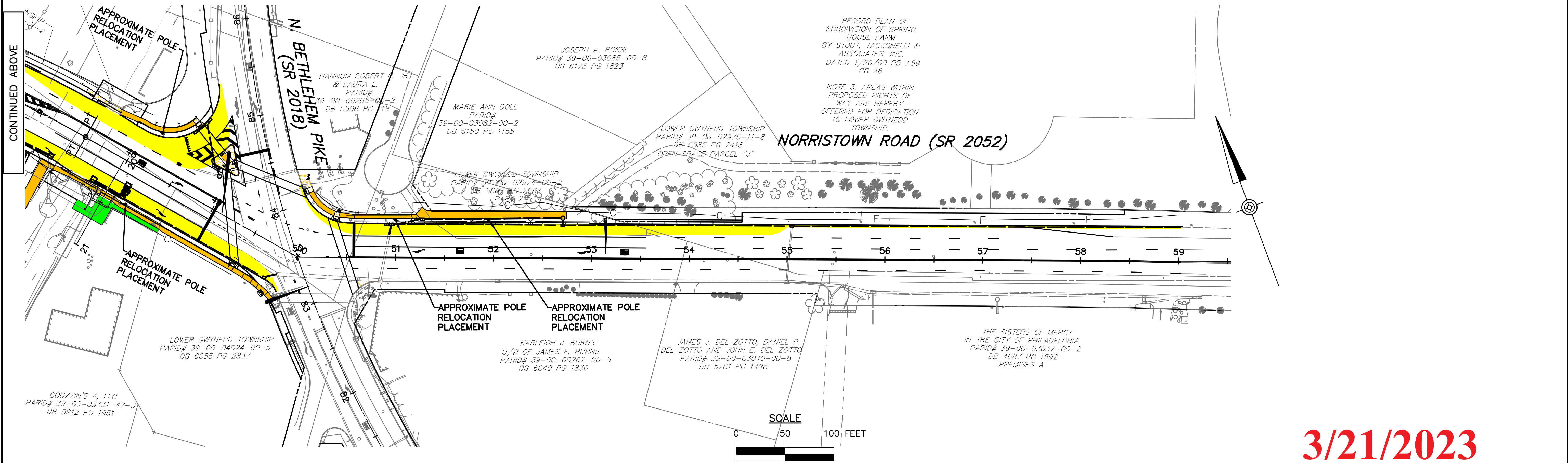
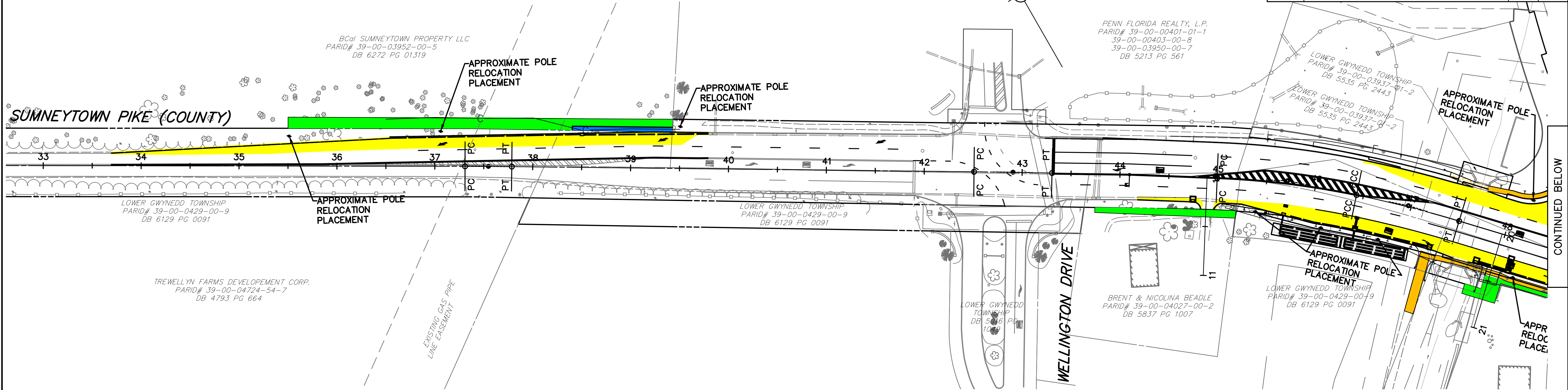


**LEGEND**

- TEMPORARY CONSTRUCTION EASEMENT
- PROPOSED CEMENT CONCRETE SIDEWALK/ASPHALT TRAIL
- F — LIMIT OF FILL/BORROW
- LEGAL RIGHT-OF-WAY
- PROPOSED FULL DEPTH PAVEMENT WIDENING
- C — LIMIT OF CUT/EXCAVATION

DISTRICT	COUNTY	ROUTE	SECTION	SHEET
6-0	MONTGOMERY	-	-	1 OF 1
LOWER GWYNEDD TOWNSHIP				
REVISION NUMBER	REVISIONS	DATE	BY	
1	PER PENNDOT AND COUNTY COMMENTS	5/31/22	MEE	



3/21/2023