



## Lower Gwynedd Township Parks & Recreation Board

September 17, 2024

Agenda

Lower Gwynedd Township Building  
6:00 p.m.

Join Zoom Meeting

<https://us06web.zoom.us/j/81988823111?pwd=91BdPFawbcg05cMHPnsgAmXIjNgTkl.1>

Meeting ID: 819 8882 3111

Passcode: 755770

Call In: 646-931-3860

1. Call to Order
2. Public Comment
3. Consideration of July 16, 2024 Meeting Minutes
4. Parks & Recreation Participation in Fall Fest
5. Park Master Plans – PECO Pollinator Gardens
6. Updates:
  - Board of Supervisor Liaison
    - i. Texaco Update
  - Recreation Director Update
  - Fall Fest Update
  - Comprehensive Plan Update
7. Review of Programs

**Next Meeting:** October, 15, 2024, 6:00 pm

**Parks and Recreation (P&R) Board Meeting Minutes**  
**Tuesday, July 16, 2024**

**Members in Attendance:** Kathy Morris; Harry Hellerman; Dan Berdahl; Morgan High; Kelly Swope, Francis Mckenzie, Michael Brockway

**Staff:** Sandi Feight

**Board of Supervisors:** Janine Martin

**Call to order:** Kathy M. called the meeting to order at 6:06 PM.

**Public comment:**

**Kyle Doll:** Presented an overview (google satellite view) of Lower Gwynedd with an overlay of [57] suggested future crosswalk locations. Another overlay showed possible trail extensions that in some cases would work in tandem with the crosswalks suggested. This planning is in keeping with the board's efforts to look ahead at possible enhancements to the township trail system for when funding becomes available. The board thanks Kyle for this work.

**Consideration of June 16, 2024 Meeting Minutes:**

Francis M. moved to approve the minutes, Dan B. seconded it, and all approved.

**Penllyn Woods Community Building WiFi Update**

Internet access is available pending the implementation of a software firewall.

**The Summer Concert Series**

The concert series is "performing" well at the new location at Pen-Ambler park. Both the location and orientation of the stage are proving to be beneficial both to band members and the audience. Members of the board are encouraged to help with parking before the start of the remaining concerts.

**Janine M. update from the BOS (Board of Supervisors):**

Grants are incoming for the Ingersoll fields so that most all proposed improvements will be implemented.

**Sandi F. Update from the recreation director**

Had a meeting with DCNR as a pre-kick off the woodland evaluation of the trees along the trails and in parks. The discussion included how to cull invasive species and maintain native trees.

The Wissahickon Valley Public Library is planning on doing major renovations to the Blue Bell location. They reached out to Sandi to see if the Township would work with them when the time comes for the renovations to start.

**Fall Fest:** All available spots for vendors and food trucks have been taken.

**Kathy M. Comprehensive plan update :**

The comprehensive plan meeting will not be until next week. Stay tuned.

**Review of Lower Gwynedd programs:**

One possible option is to work with Wissahickon trails on their creek clean up rather than the Lower Gwynedd trail clean up. Perhaps offering to clean the green ribbon area adjacent to Penllyn woods. This topic will be brought up again as we continue to consolidate our schedule(s.)

**Meeting adjourned at 7:19**

# Memorandum

To: Parks & Recreation Board  
From: Sandi Feight, Recreation Director  
Date: September 13, 2024  
Re: PECO Pollinator Gardens – Pen Ambler & Oxford Park Master Plans

Attached you will find two pollinator gardens designed by Gilmore & Associates. The funding for these two gardens was through a grant from PECO.

The Environmental Advisory Council was asked to look at the plant list and make any suggestions. At their Wednesday, September 11, 2024 meeting they had the following suggestions.

## Pen Ambler Park

Celthra Alnifolia was a concern because the area in the park is moderate to dry, recommended this plant be removed. It was recommended doubling up on the Physocarpus Opulifolius.

There was also a discussion regarding Lobelia Siphilitica, it isn't reliable, not long living and self seeds but not where you want it too. They were concerned about the number of plugs.

They recommended Vernonia Fasciculata. They felt that was a more reliable choice.

Oxford Park no changes.

The Parks & Recreation Board is asked to review the plan as well and make any suggestions or comments and make a recommendation to the Board of Supervisors.

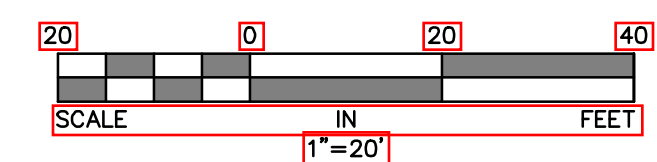


AERIAL IMAGERY - GOOGLE, 2022  
 PARCELS & ROADS - MONTGOMERY COUNTY PLANNING COMMISSION, 2022  
 IMPERVIOUS SURFACES - DVRPC, 2015  
 LIDAR TOPOGRAPHY - PaMAP, 2008

PENNSYLVANIA ONE CALL SYSTEM, INC.  
 811  
 BEFORE YOU DIG ANYWHERE IN PENNSYLVANIA CALL 1-800-242-1776  
 NON-MEMBERS MUST BE CONTACTED DIRECTLY  
 PA LAW REQUIRES THREE WORKING DAYS NOTICE TO UTILITIES BEFORE YOU EXCAVATE  
 (DRILL, BLAST OR DEMOLISH)  
 SERIAL NO. #####

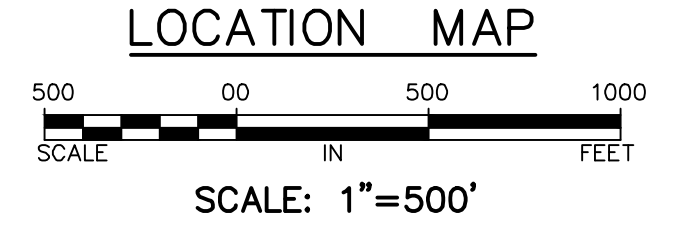
LOCATIONS OF EXISTING UNDERGROUND UTILITIES/FACILITIES SHOWN HEREON HAVE BEEN DEVELOPED FROM RECORDS, FIELD MARKOUTS BY UTILITY OWNERS, AND/OR ABOVE-GROUND OBSERVATION OF THE SITE. NO EXCAVATIONS WERE PERFORMED IN THE PREPARATION OF THESE DRAWINGS; THEREFORE ALL UTILITIES SHOWN SHOULD BE CONSIDERED APPROXIMATE IN LOCATION, DEPTH, AND SIZE. THE POTENTIAL EXISTS FOR OTHER UNDERGROUND UTILITIES/FACILITIES TO BE PRESENT WHICH ARE NOT SHOWN ON THE DRAWINGS. ONLY THE VISIBLE LOCATIONS OF UNDERGROUND UTILITIES/FACILITIES AT THE TIME OF FIELD SURVEY SHALL BE CONSIDERED TRUE AND ACCURATE. COMPLETENESS OR ACCURACY OF UNDERGROUND UTILITIES/FACILITIES ARE NOT GUARANTEED BY GILMORE & ASSOCIATES INC.  
 ALL CONTRACTORS WORKING ON THIS PROJECT SHALL VERIFY LOCATION AND DEPTH OF ALL UNDERGROUND UTILITIES/FACILITIES PRIOR TO START OF WORK AND SHALL COMPLY WITH THE REQUIREMENTS OF P.L. 652, NO. 287 DECEMBER 10, 1974 AS LAST AMENDED ON APRIL 28, 2018 PENNSYLVANIA ACT 50.  
 GILMORE & ASSOCIATES INC. HAS OBTAINED A PA-ONE CALL SERIAL NUMBER AS NOTED HEREON FOR DESIGN PURPOSES ONLY.

PLANT SCHEDULE - OXFORD PARK				
KEY	QTY.	BOTANICAL NAME	COMMON NAME	ROOT
<b>SHRUBS</b>				
CL	3	CALLICARPA AMERICANA	BEAUTYBERRY	36" MIN C:CONT
CE	3	CEANOTHUS AMERICANUS	NEW JERSEY TEA	24" MIN C:CONT
<b>PLUGS</b>				
AT	50	ASCLEPIAS TUBEROSA	BUTTERFLYWEED	50 LP PLUG
CO	100	COREOPSIS LANCEOLATA	LANCELEAF COREOPSIS	50 LP PLUG
EC	50	EUPHORBIA COROLLATA	FLOWERING SPURGE	50 LP PLUG
PD	100	PENSTEMON DIGITALIS	FOXGLOVE BEARDTONGUE	50 LP PLUG
SR	100	SOLIDAGO RUGOSA	WRINKLELEAF GOLDENROD	50 LP PLUG



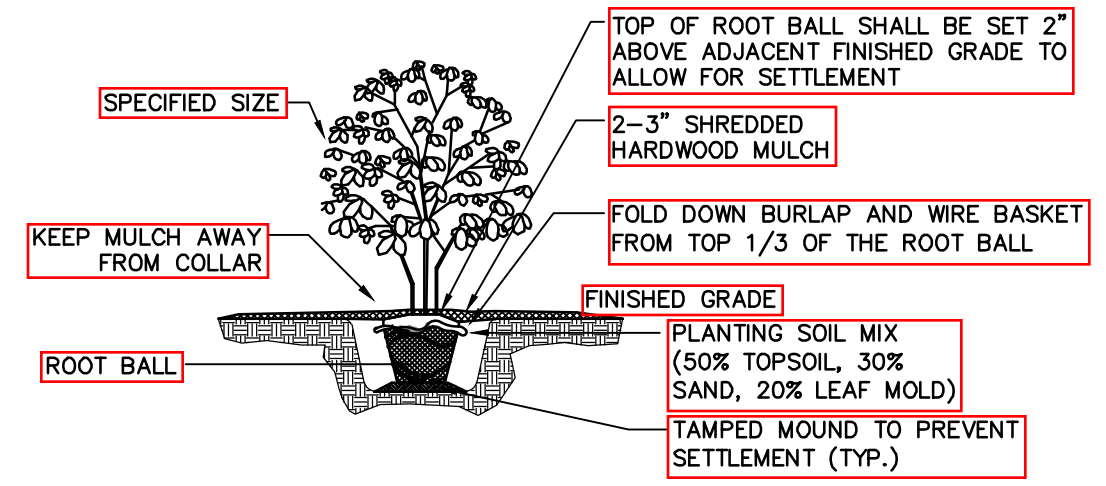
**PLANTING NOTES:**

1. PLANT MATERIAL SHALL BE FURNISHED AND INSTALLED AS INDICATED INCLUDING ALL LABOR, MATERIALS, PLANTS, EQUIPMENT, INCIDENTALS AND CLEAN UP.
2. THE CONTRACTOR SHALL BE RESPONSIBLE FOR PLANTING AT CORRECT GRADES AND ALIGNMENT.
3. PLANTS SHALL BE TYPICAL OF THEIR SPECIES AND VARIETY, HAVE NORMAL GROWTH HABITS, WELL DEVELOPED BRANCHES, BE DENSELY FOLIATED, HAVE VIGOROUS ROOT SYSTEMS AND BE FREE FROM DEFECTS AND INJURIES.
4. CONTRACTOR SHALL REPORT ANY SOIL OR DRAINAGE CONDITIONS CONSIDERED DETRIMENTAL TO THE GROWTH OF THE PLANT MATERIAL.
5. ALL PLANT MATERIAL SHALL BE GUARANTEED BY THE CONTRACTOR TO BE IN VIGOROUS GROWING CONDITION. PROVISIONS SHALL BE MADE FOR A GUARANTEE OF AT LEAST EIGHTEEN (18) MONTHS FOR SHRUBS. REPLACEMENT SHALL BE MADE AT THE BEGINNING OF THE FIRST SUCCEEDING PLANTING SEASON. ALL REPLACEMENTS SHALL HAVE A GUARANTEE EQUAL TO THAT STATED ABOVE.
6. INsofar as it is PRACTICABLE, PLANT MATERIALS SHALL BE PLANTED ON THE DAY OF DELIVERY. IN THE EVENT THIS IS NOT POSSIBLE, THE CONTRACTOR SHALL PROTECT STOCK NOT PLANTED. PLANTS SHALL NOT REMAIN UNPLANTED FOR LONGER THAN A THREE (3) DAY PERIOD AFTER DELIVERY.
7. QUALITY AND SIZE OF PLANTS, SPREAD OF ROOTS, AND SIZE OF BALLS SHALL BE IN ACCORDANCE WITH THE 1990 "AMERICAN STANDARD FOR NURSERY STOCK" AS PUBLISHED BY THE AMERICAN ASSOCIATION OF NURSERYMAN INC., LATEST EDITION.
8. ALL PLANTS SHALL BE PLANTED IN TOPSOIL THAT IS THOROUGHLY WATERED AND TAMPED AS BACKFILLING PROGRESSES. NOTHING BUT SUITABLE TOPSOIL, FREE OF DRY SOD, STIFF CLAY, LITTER, ETC., SHALL BE USED FOR PLANTING.
9. PLANTING OPERATIONS SHALL BE PERFORMED DURING PERIODS WITHIN THE PLANTING SEASON WHEN WEATHER AND SOIL CONDITIONS ARE SUITABLE AND IN ACCORDANCE WITH ACCEPTED LOCAL PRACTICE.
10. SET ALL PLANTS PLUMB AND STRAIGHT. SET AT SUCH A LEVEL THAT AFTER SETTLEMENT, A NORMAL OR NATURAL RELATIONSHIP TO THE CROWN OF THE PLANT WITH THE GROUND SURFACE WILL BE ESTABLISHED. LOCATE PLANT IN THE CENTER OF THE PLANTING PIT.
11. EACH SHRUB SHALL BE PRUNED IN ACCORDANCE WITH STANDARD HORTICULTURAL PRACTICE TO PRESERVE NATURAL CHARACTER OF THE PLANT. PRUNING SHALL BE DONE WITH CLEAN, SHARP TOOLS.
12. LANDSCAPING CONTRACTOR SHALL VERIFY LOCATION OF ALL UTILITIES PRIOR TO PLACEMENT OF LANDSCAPE MATERIAL. CONTRACTOR SHALL NOT PLACE LANDSCAPING MATERIAL ON TOP OF UTILITY PIPING.
13. PLAN QUANTITIES SHALL SUPERCEDE PLANT LIST.

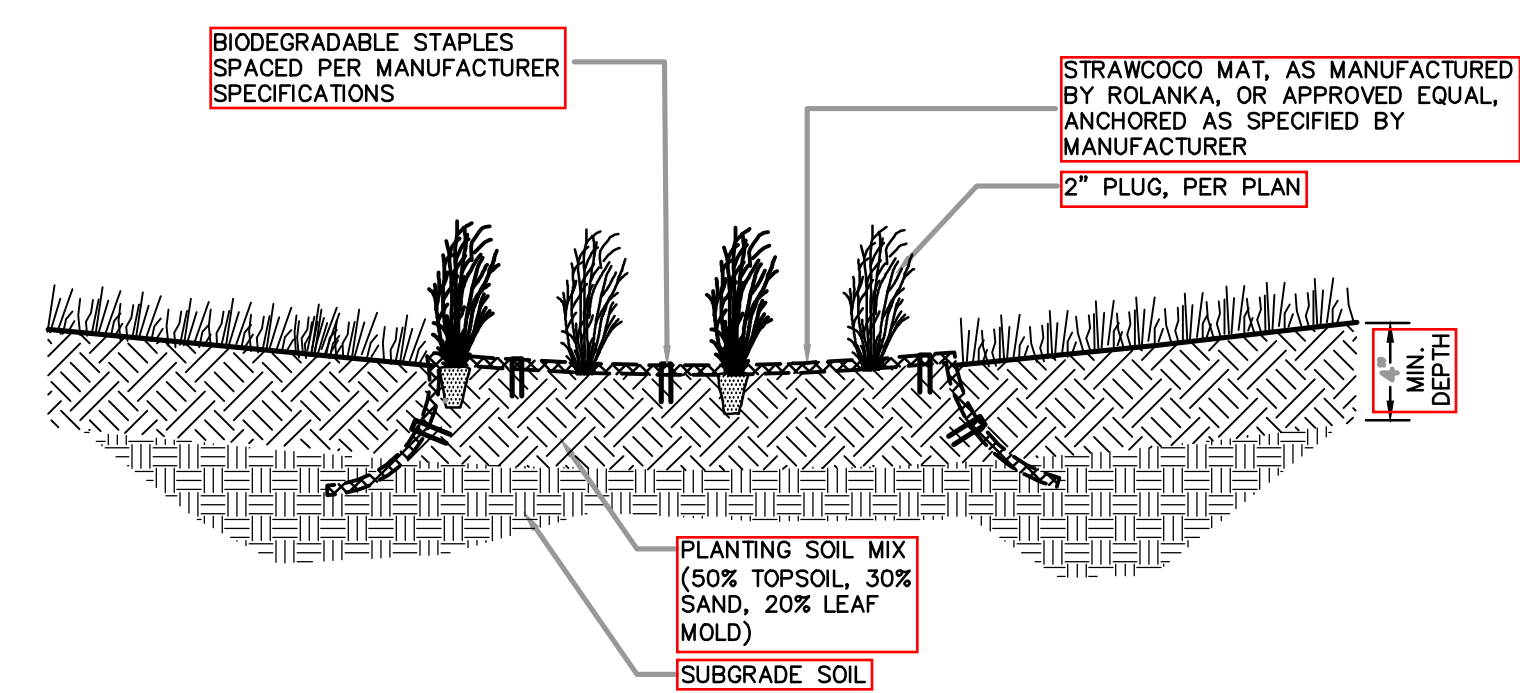


**LEGEND**

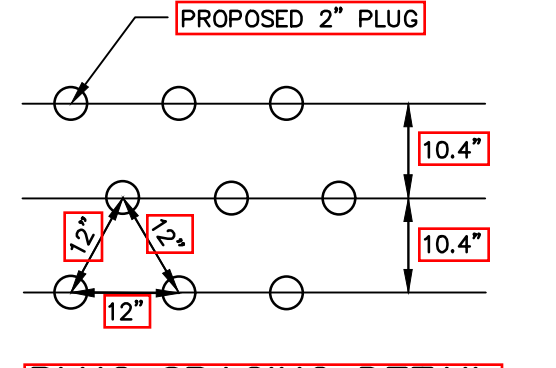
- EDGE OF PAVE
- LEGAL RIGHT-OF-WAY
- PROPERTY LINE
- MAJOR CONTOURS
- SHRUB



**SHRUB PLANTING AND SHRUB BED PREPARATION**



**PLUG PLANTING DETAIL**



**PLUG SPACING DETAIL**

**GILMORE & ASSOCIATES, INC.**  
 ENGINEERING & CONSULTING SERVICES  
 96 EAST BUTLER AVENUE, SUITE 100, NEW BRITAIN, PA 19001 • (215) 345-4330 • www.gilmoreassoc.com  
 ONLY THOSE PLANS INCORPORATING THE PROFESSIONAL SEAL AND SIGNATURE OF THE REGISTERED PROFESSIONAL ENGINEER, ARCHITECT, LANDSCAPE ARCHITECT, OR PROFESSIONAL LANDSCAPE ARCHITECT PREPARED, SPECIFICALLY FOR THE CLIENT AND PROJECT DESIGNATED HEREON, MODIFICATION, REVISION, DUPLICATION OR USE WITHOUT THE WRITTEN CONSENT OF GILMORE & ASSOCIATES, INC. IS PERMITTED.  
 © COPYRIGHT 2024 GILMORE & ASSOCIATES, INC. ALL RIGHTS RESERVED.

REV.	DESCRIPTION	DATE	BY

LANDSCAPE PLAN  
**LOWER GWYNEDD TOWNSHIP PECO POLLINATOR GARDENS**  
 LOWER GWYNEDD TOWNSHIP, MONTGOMERY COUNTY, PENNSYLVANIA  
**OXFORD PARK POLLINATOR GARDEN**

**GILMORE & ASSOCIATES, INC.**  
 ENGINEERING & CONSULTING SERVICES  
 PROJECT No.: 9991022  
 OWNERS INFO:  
 LOWER GWYNEDD TOWNSHIP  
 1130 NORTH BRIDGEMAN PIKE  
 SPRING HOUSE, PA 19477  
 215-646-5302  
 MUNICIPAL FILE No.:  
 TAX MAP PARCEL No.: 39-00-04846-00-2  
 TOTAL AREA: 7.8 AC TOTAL LOTS: 11  
 DATE: 09/04/24 SCALE: 1"=20'  
 DRAWN BY: TPL CHECKED BY: JSG  
 SHEET NO.: 2 OF 2

\\n01.gilmore.local\server1\MUNICIPAL\2022\22101028-LGT\_Park Master Plans - DCED Grant\Master Plans\Pollinator Garden Aerials.dwg Layout: Oxford Park Pollinator Garden Plotted By: Itevin, on Wed Sep 04, 2024 at 2:48pm

\\net\gilmore\local\server1\MUNICIPAL\2022\2210\08-L01\_Park Master Plans - DCED Grant\Master Plans\Pollinator Garden Aerials.dwg Layout: Pen-Ambler Park Pollinator Garden Plotted By: ldevin, on Wed Sep 04, 2024 at 2:48pm



AERIAL IMAGERY - GOOGLE, 2022  
 PARCELS & ROADS - MONTGOMERY COUNTY PLANNING COMMISSION, 2022  
 IMPERVIOUS SURFACES - DVMPC, 2015  
 LIDAR TOPOGRAPHY - PDMAP, 2008

PENNSYLVANIA ONE CALL SYSTEM, INC.



BEFORE YOU DIG ANYWHERE IN PENNSYLVANIA CALL 1-800-242-1776. NON-MEMBERS MUST BE CONTACTED DIRECTLY.

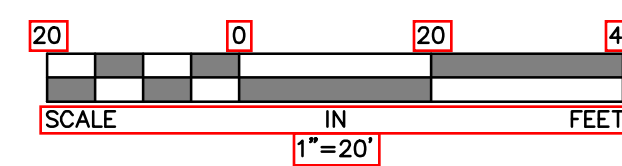
PLEASE REMEMBER THESE WORKING DAYS: NOTICE TO UTILITIES BEFORE YOU EXCAVATE. (DRILL, BEAST OR DEMO) SERIAL NO. #####

LOCATIONS OF EXISTING UNDERGROUND UTILITIES/FACILITIES SHOWN HEREON HAVE BEEN DEVELOPED FROM RECORDS, FIELD MARKOUTS BY UTILITY OWNERS, AND/OR ABOVE-GROUND OBSERVATION OF THE SITE. NO EXCAVATIONS WERE PERFORMED IN THE PREPARATION OF THESE DRAWINGS; THEREFORE ALL UTILITIES SHOWN SHOULD BE CONSIDERED APPROXIMATE IN LOCATION, DEPTH, AND SIZE. THE POTENTIAL EXISTS FOR OTHER UNDERGROUND UTILITIES/FACILITIES TO BE PRESENT WHICH ARE NOT SHOWN ON THE DRAWINGS. ONLY THE VISIBLE LOCATIONS OF UNDERGROUND UTILITIES/FACILITIES AT THE TIME OF FIELD SURVEY SHALL BE CONSIDERED TRUE AND ACCURATE. COMPLETENESS OR ACCURACY OF UNDERGROUND UTILITIES/FACILITIES ARE NOT GUARANTEED BY GILMORE & ASSOCIATES INC.

ALL CONTRACTORS WORKING ON THIS PROJECT SHALL VERIFY LOCATION AND DEPTH OF ALL UNDERGROUND UTILITIES/FACILITIES PRIOR TO START OF WORK AND SHALL COMPLY WITH THE REQUIREMENTS OF P.L. 852, NO. 287 DECEMBER 10, 1974 AS LAST AMENDED ON APRIL 28, 2018 PENNSYLVANIA ACT 50.

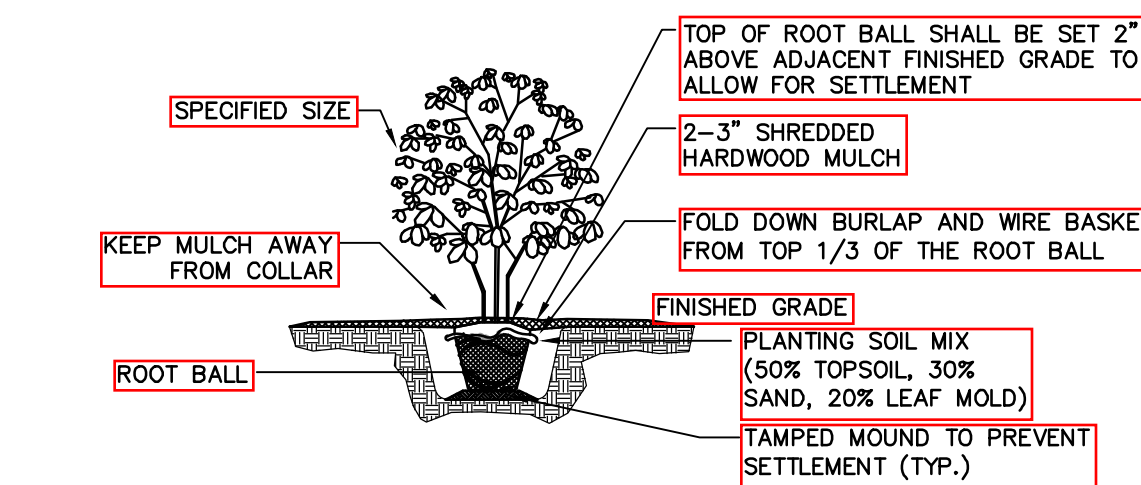
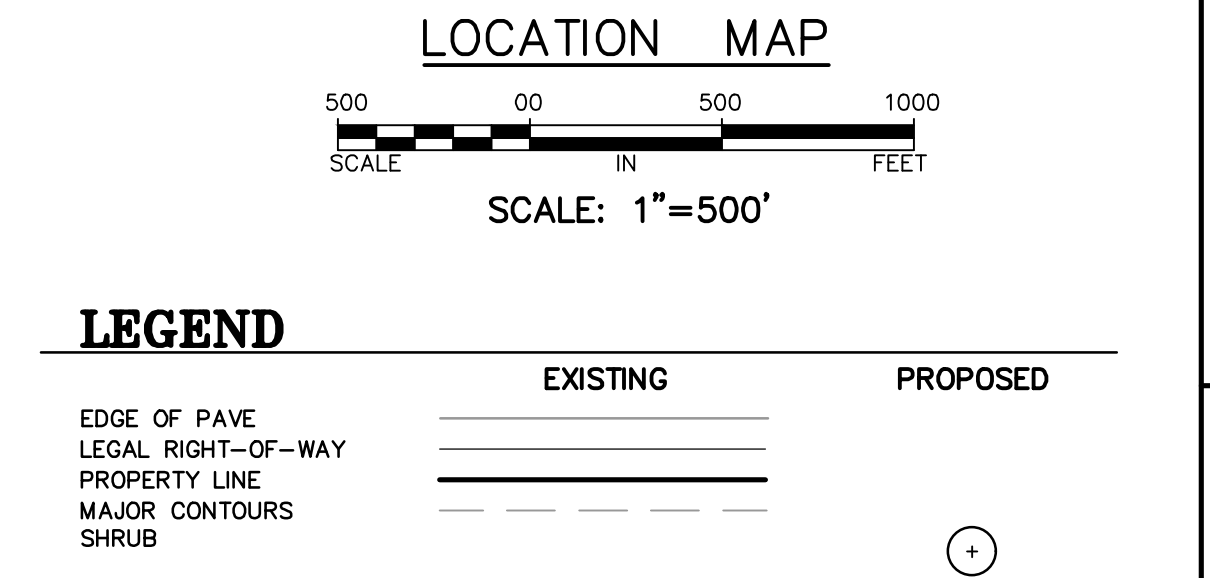
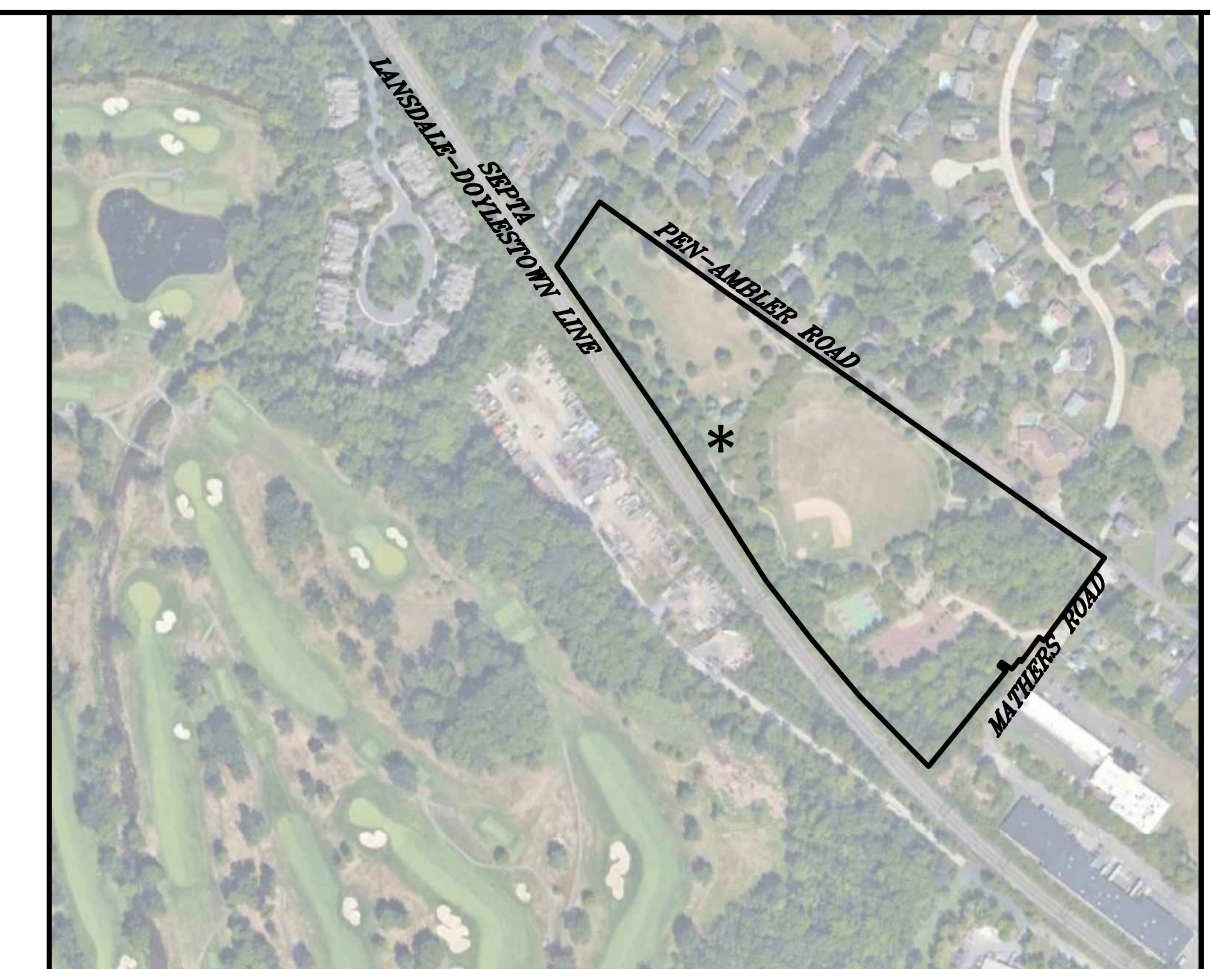
GILMORE & ASSOCIATES INC. HAS OBTAINED A PA-ONE CALL SERIAL NUMBER AS NOTED HEREON FOR DESIGN PURPOSES ONLY.

PLANT SCHEDULE - PEN-AMBLER PARK					
KEY	QTY.	BOTANICAL NAME	COMMON NAME	SIZE	ROOT
CA	3	CLETHRA ALNIFOLIA	SUMMERSWEET	36" MIN	CONT
PO	3	PHYSOCARPUS OPULIFOLIUS	COMMON NINEBARK	36" MIN	CONT
ST	3	SPIRAEA TOMENTOSA	STEEPLEBUSH	18" MIN	CONT
<b>PLUGS</b>					
AI	100	ASCLEPIAS INCARNATA	SWAMP MILKWEED	50LP	PLUG
CO	150	COREOPSIS LANCEOLATA	LANCILEAF COREOPSIS	50LP	PLUG
EP	200	ECHINACEA PURPUREA	PURPLE CONEFLOWER	50LP	PLUG
LS	150	LOBELIA SIPHILITICA	GREAT BLUE LOBELIA	50LP	PLUG
PD	150	PENSTEMON DIGITALIS	FOXGLOVE BEARDTONGUE	50LP	PLUG
RH	100	RUDBECKIA HIRTA	BLACK-EYED SUSAN	50LP	PLUG
VN	100	VERNONIA NOVEBORACENSIS	NEW YORK IRONWEED	50LP	PLUG
ZA	100	ZIZIA AUREA	GOLDEN ALEXANDERS	50LP	PLUG

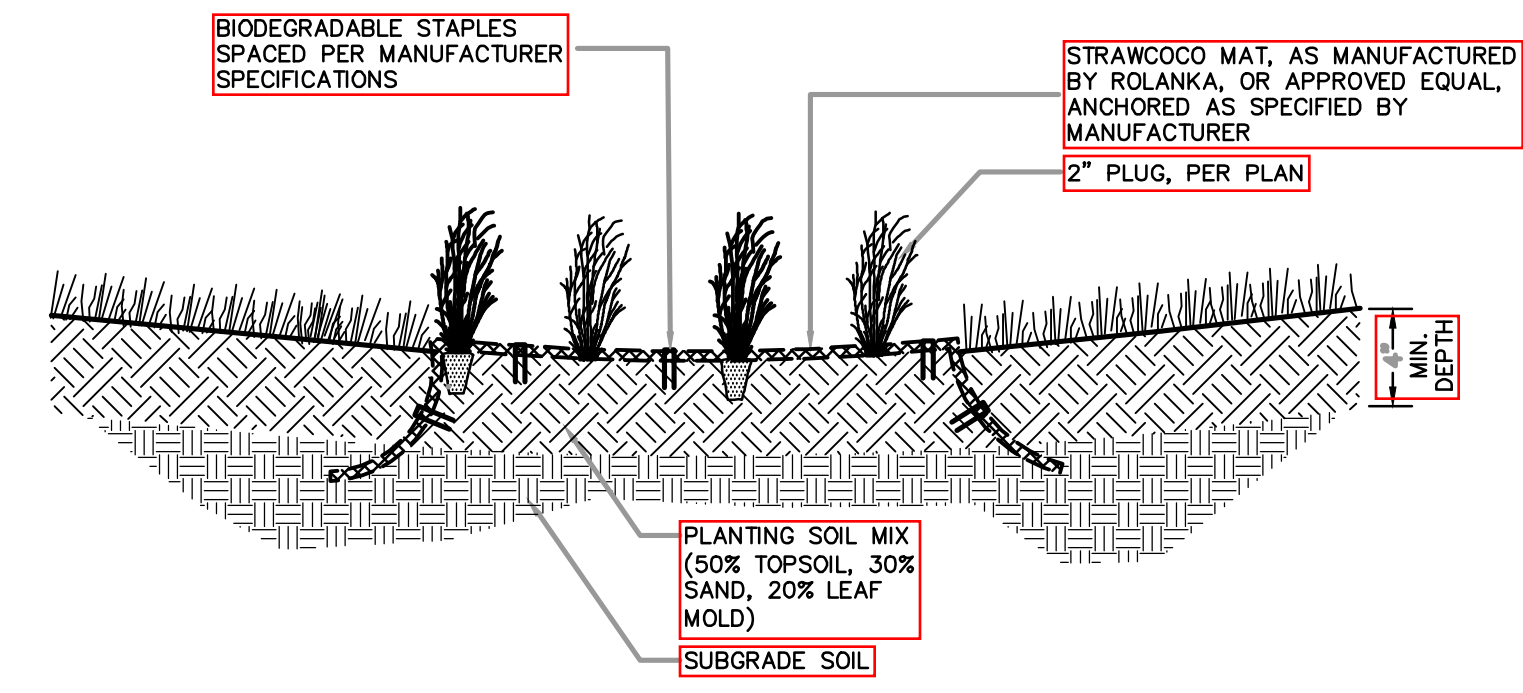


**PLANTING NOTES:**

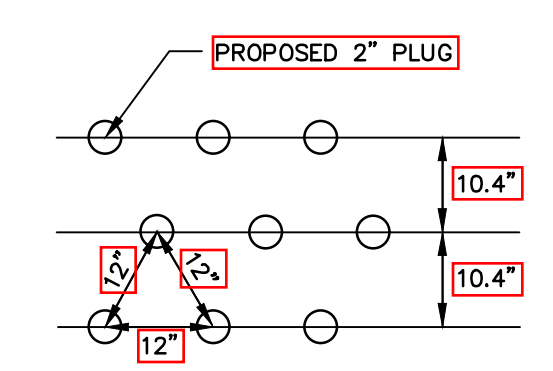
- PLANT MATERIAL SHALL BE FURNISHED AND INSTALLED AS INDICATED INCLUDING ALL LABOR, MATERIALS, PLANTS, EQUIPMENT, INCIDENTALS AND CLEAN UP.
- THE CONTRACTOR SHALL BE RESPONSIBLE FOR PLANTING AT CORRECT GRADES AND ALIGNMENT.
- PLANTS SHALL BE TYPICAL OF THEIR SPECIES AND VARIETY, HAVE NORMAL GROWTH HABITS, WELL DEVELOPED BRANCHES, BE DENSELY FOLIATED, HAVE VIGOROUS ROOT SYSTEMS AND BE FREE FROM DEFECTS AND INJURIES.
- CONTRACTOR SHALL REPORT ANY SOIL OR DRAINAGE CONDITIONS CONSIDERED DETRIMENTAL TO THE GROWTH OF THE PLANT MATERIAL.
- ALL PLANT MATERIAL SHALL BE GUARANTEED BY THE CONTRACTOR TO BE IN VIGOROUS GROWING CONDITION. PROVISIONS SHALL BE MADE FOR A GUARANTEE OF AT LEAST EIGHTEEN (18) MONTHS FOR SHRUBS. REPLACEMENT SHALL BE MADE AT THE BEGINNING OF THE FIRST SUCCEEDING PLANTING SEASON. ALL REPLACEMENTS SHALL HAVE A GUARANTEE EQUAL TO THAT STATED ABOVE.
- INSOFAR AS IT IS PRACTICABLE, PLANT MATERIALS SHALL BE PLANTED ON THE DAY OF DELIVERY. IN THE EVENT THIS IS NOT POSSIBLE, THE CONTRACTOR SHALL PROTECT STOCK NOT PLANTED. PLANTS SHALL NOT REMAIN UNPLANTED FOR LONGER THAN A THREE (3) DAY PERIOD AFTER DELIVERY.
- QUALITY AND SIZE OF PLANTS, SPREAD OF ROOTS, AND SIZE OF BALLS SHALL BE IN ACCORDANCE WITH THE 1990 "AMERICAN STANDARD FOR NURSERY STOCK" AS PUBLISHED BY THE AMERICAN ASSOCIATION OF NURSERYMAN INC., LATEST EDITION.
- ALL PLANTS SHALL BE PLANTED IN TOPSOIL THAT IS THOROUGHLY WATERED AND TAMPED AS BACKFILLING PROGRESSES. NOTHING BUT SUITABLE TOPSOIL, FREE OF DRY SOD, STIFF CLAY, LITTER, ETC., SHALL BE USED FOR PLANTING.
- PLANTING OPERATIONS SHALL BE PERFORMED DURING PERIODS WITHIN THE PLANTING SEASON WHEN WEATHER AND SOIL CONDITIONS ARE SUITABLE AND IN ACCORDANCE WITH ACCEPTED LOCAL PRACTICE.
- SET ALL PLANTS PLUMB AND STRAIGHT. SET AT SUCH A LEVEL THAT AFTER SETTLEMENT, A NORMAL OR NATURAL RELATIONSHIP TO THE CROWN OF THE PLANT WITH THE GROUND SURFACE WILL BE ESTABLISHED. LOCATE PLANT IN THE CENTER OF THE PLANTING PIT.
- EACH SHRUB SHALL BE PRUNED IN ACCORDANCE WITH STANDARD HORTICULTURAL PRACTICE TO PRESERVE NATURAL CHARACTER OF THE PLANT. PRUNING SHALL BE DONE WITH CLEAN, SHARP TOOLS.
- LANDSCAPING CONTRACTOR SHALL VERIFY LOCATION OF ALL UTILITIES PRIOR TO PLACEMENT OF LANDSCAPE MATERIAL. CONTRACTOR SHALL NOT PLACE LANDSCAPING MATERIAL ON TOP OF UTILITY PIPING.
- PLAN QUANTITIES SHALL SUPERCEDE PLANT LIST.



**SHRUB PLANTING AND SHRUB BED PREPARATION**  
 NOT TO SCALE



**PLUG PLANTING DETAIL**  
 NOT TO SCALE



**PLUG SPACING DETAIL**  
 NOT TO SCALE

**GILMORE & ASSOCIATES, INC.**  
 ENGINEERING & CONSULTING SERVICES  
 85 EAST BULLER AVENUE, SUITE 100, NEW BRITAIN, PA 19101 • (717) 348-3338 • www.gilmore-inc.com  
 ONLY THOSE PLANS INCORPORATING THE PROFESSIONAL SEAL SHOULD BE CONSIDERED OFFICIAL AND RELIED UPON BY USER. THIS PLAN IS PREPARED SPECIFICALLY FOR THE CLIENT AND PROJECT DESIGNATED HEREON. NO OTHER USES ARE PERMITTED WITHOUT THE WRITTEN CONSENT OF GILMORE & ASSOCIATES, INC. IS PROHIBITED.  
 © COPYRIGHT 2024 GILMORE & ASSOCIATES, INC. ALL RIGHTS RESERVED.

DATE	BY	DESCRIPTION	REV

LANDSCAPE PLAN  
**LOWER GWYNEDD TOWNSHIP PECO POLLINATOR GARDENS**  
 LOWER GWYNEDD TOWNSHIP, MONTGOMERY COUNTY, PENNSYLVANIA  
**PEN-AMBLER PARK POLLINATOR GARDEN**

**GILMORE & ASSOCIATES, INC.**  
 ENGINEERING & CONSULTING SERVICES  
 PROJECT No.: 9991022  
 OWNERS: PECO ENERGY SERVICES  
 LOWER GWYNEDD TOWNSHIP  
 1130 NORTH BETHLEHEM PIKE  
 SPRING HOUSE, PA 19477  
 (215-646-3302)  
 MUNICIPAL FILE No.:  
 TAX MAP PARCEL No.: 39-00-03934-50-7  
 TOTAL AREA: 18.57 AC TOTAL LOTS: 2  
 DATE: 09/04/24 SCALE: 1"=20'  
 DRAWN BY: TPL CHECKED BY: JSC  
 SHEET NO.: 1 OF 2