

Lower Gwynedd



SPRING 2025

Report



Thank you to Ashley Brasch for submitting the photo featured on our cover. This is a photo she took a few years ago at Pen-Ambler Park of her dog with the spring blooms.

IN THIS ISSUE

Township E-Newsletter.....	3
Social Media	3
Lower Gwynedd Township Directory.....	4
Lower Gwynedd Board of Supervisors	4
Citizen Request Portal.....	4
Community Resources and Contacts.....	5
Lower Gwynedd Police.....	6
Land Development and Subdivision.....	7
2024 Grants	8
Going Green Award.....	9
Wissahickon High School Native Garden	9
How Can We Make Recycling Better Together.....	10
Small Animals and Deer.....	11
How to Manage Deer Damage.....	11



Code Enforcement.....	11
Parks And Recreation	12,13
New Public Works Facility.....	14
Trash and Recycling.....	14
Sidewalks & Trails Strategic Plan	15
Comp Plan Update.....	16
Tax Collector	16
Ingersoll House	17
Annual Native Tree Giveaway	17
Empty. Clean. Dry.	18
Shredding and E-Cycle Event.....	19
Rain Barrels	20
Environmental Advisory Council	21
Ready Montco.....	22

- Pharmacy staff dedicated to your health and wellness

- We accept most Medicare Part D Plans

- Courteous service by people who know your name



215-646-1691



1121 N. Bethlehem Pike
Spring House, PA 19477
www.villagepharmacyatspringhouse.com



Family Owned and Operated Since 1992



**Real Patients.
Real Smiles.**

We create exceptional smiles every day!



Your Smile Starts Today!

With our **FREE** Smile Consultation

Call Today 215-646-5777

WWW.STELZERDENTAL.COM

1108 N. Bethlehem Pike, Suite 2
Lower Gwynedd, PA 19002

(Across from the Spring House Village Shopping Center)

- ✓ Patient friendly financing
- ✓ Complete care for the entire family
- ✓ Cosmetic Dentistry
- ✓ Dental Implants
- ✓ In-office & At-home Teeth Whitening options



Peter "Skip" Urban, Supervisor, Lower Gwynedd Resident
Peter A. Urban, Jr., Funeral Director, Upper Dublin Resident

Honor a Life Well Lived

1111 South Bethlehem Pike Ambler, PA
215-646-8556 UrbanFuneralHome.com

LIFE IS BETTER ON VACATION!

AspireLandandSeaTravel.com

NICOLE SINOPOLI
Travel Advisor
610-680-2444
nicole.sinopoli@cruiseplanners.com

Cruise Planners- Nicole Sinopoli
 aspire_travel_cp

CRUISE PLANNERS
YOUR CRUISE & VACATION EXPERTS

Aspire Land and Sea Travel
Blue Bell, PA



Power Your Business through the Lower Gwynedd Business Association



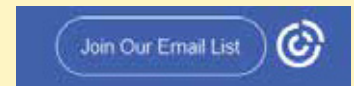
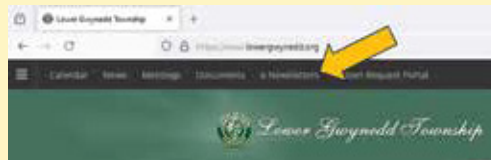
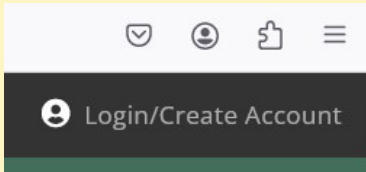
JOIN TODAY

WWW.LOWERGWYNEDDBIZ.COM

TOWNSHIP E-NEWSLETTER

Do you receive our e-newsletters? It is a great way to stay informed about various events within the township. The e-newsletter is sent out two times a month. Sign up today at lowergwynedd.org. There are two ways to sign up.

One is to click on "Login/Create Account" in the upper right-hand corner, complete the information and choose the notifications you wish to receive. The second way is to click on e-newsletters across the top of the page, then click any e-newsletter from the list. You will then see "Join our Email List" across the top. Complete the information and confirm sign up.



Instagram
#LOWERGWYNEDDTWP

Facebook
#LOWERGWYNEDDTOWNSHIP

X
#LOWERGWYNEDDPA

PA018147

JMTawnings

215-659-5239
www.jmtawnings.com

*The Quality, Reliability
& Experience You Expect*

perfecta
Retractable Fabric Awnings
Manufactured Locally

RECOMMENDED
SKIN CANCER FOUNDATION

LOWER GWYNEDD TOWNSHIP

1130 N. Bethlehem Pike, P. O. Box 625 | Spring House, PA 19477 | www.lowergwynedd.org

Administration

Phone: (215) 646-5302 | Fax: (215) 646-3557

Police

Emergency: 911 | Phone: (215) 646-5303

BOARD OF SUPERVISORS

Danielle A. Duckett, *Chair*

Michael Twersky, *Vice-Chair*

Jimmy Chong

Tessie McNeely

Janine Martin

Lower Gwynedd Township Staff

Township Manager: Mimi Gleason

Assistant Manager: Jamie Worman

Office Manager: Michelle Farzetta

Finance Director: Melinda Haldeman

Zoning Officer: Jamie Worman

Building Inspection/Plan Review: Keystone

Municipal Services

Recreation Director: Sandi L. Feight

Parks Superintendent: Mitch Kulp

Police Chief: Paul Kenny

Public Works Director: Fred Zollers

Solicitor: Neil Stein, Esq., Kaplan Stewart

Engineer: Gilmore and Associates

Traffic Engineer: Bowman Company

E.I.T. Merc and LST Collection: Berkheimer Associates

Tax collector: Natalie Cormier

LOWER GWYNEDD TOWNSHIP MEETING SCHEDULE

*All meetings to be held in the administrative Office at
1130 N. Bethlehem Pike, Springhouse*

PLEASE NOTE: Generally meetings are as follows except when holidays conflict:

- Board of Supervisors (7:00 pm)..... 2nd and 4th Tuesday
- Zoning Hearing Board (6:00 pm)..... 2nd Thursday
- Planning Commission (7:00 pm)..... 3rd Wednesday
- Park & Recreation (6:00 pm) 3rd Tuesday
- Environmental Advisory Council (7:00 pm)..... 2nd Wednesday
- Human Relations Commission (7:00 pm) 1st Thursday of the last month of every quarter

Deadline for Submissions:

Zoning Hearing Board

30 days prior to scheduled meeting

Planning Commission

30 days prior to scheduled meeting

Upcoming Holidays/Township Closed

April 18th Good Friday

May 26th Memorial Day

June 19th Juneteenth

July 4th Independence Day

September 1st Labor Day

LOWER GWYNEDD BOARD OF SUPERVISORS



Danielle Duckett, *Chair*



Mike Twersky, *Vice Chair*



Tessie McNeely



Janine Martin

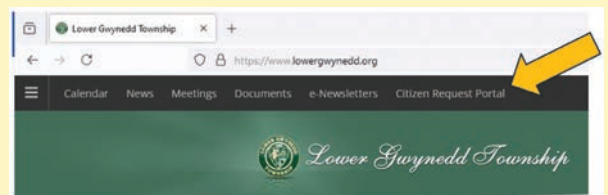


Jimmy Chong

CITIZENS REQUEST PORTAL

Have you used our Citizens Request Portal? This is a great way for citizens to report any non-emergency issues within the township. Once submitted the report will be sent to the appropriate department to be addressed. The portal allows you to include photos, as well. An email confirmation and any updates will be sent to you, as well as a notification when the concern has been completed. Please note this portal is not a substitute for normal building permit submissions, scheduling, sewer billing, Right to Know requests or police related issues.

To access the portal, go to our website www.lowergwynedd.org. Click on “Citizens Request Portal” along the top of the page. You will then be prompted to click the link to the portal, where you will select the department, your concern should be routed to. There you will click the green Submit a Request tab, complete the form and hit “Report it” to submit.



COMMUNITY RESOURCES AND CONTACTS

Community Information

Lower Gwynedd Township
1130 N. Bethlehem Pike
Spring House, PA 19477
215-646-5302
www.lowergwynedd.org

Wissahickon Valley Public Library
Blue Bell Branch
650 W. Skippack Pike
Blue Bell, Pa 19422
215-643-1320
www.wvpl.org

Wissahickon Valley Public Library
Ambler Branch
209 Race Street
Ambler, PA 19002
215-646-1072
www.wvpl.org

Wissahickon Schools

www.wsdweb.org
Lower Gwynedd Elementary
215-619-8100

Blue Bell Elementary
215-619-8102

Shady Grove Elementary
215-619-8106

Wissahickon Middle School
215-619-8110

Wissahickon High School
215-619-8112

Tax Collector Information

Real Estate, School, and County
Natalie Cormier, Tax Collector
P.O. Box 3042
Ambler, Pa 19002
Office Location - 428 Knight Road
Lower Gwynedd, PA 19002
267-460-1891
taxcollector@lowergwynedd.org

Earned Income, Local Services Tax,
Business Privilege & Mercantile Taxes
Berkheimer Tax Administrator
Bridgeport Borough Hall

63 West 4th Street
Bridgeport, Pa 19405
1-800-360-8989
www.hab-inc.com

Emergency and EMS

Police (non-emergency)
1130 N. Bethlehem Pike
Spring House, Pa 19477
215-646-5303
www.lowergwynedd.org/departments/police-department/

Wissahickon Fire Company
1130 N. Bethlehem Pike
Spring House, Pa 19477
245 Race Street
Ambler, Pa 19002
215-646-1266
www.station7.org

North Penn Volunteer Fire Company
141 S. Main Street
North Wales, PA 19454
215-699-4337
www.northpennfire.com

Community Ambulance Assoc. of Ambler
1414 E. Butler Ave
Ambler, PA 19002
215-643-6517
<https://amblerambulance.org/>

Utility Providers

PECO Customer Care
1-800-494-4000
www.peco.com
PECO (outage)
1-800-841-4141

North Wales Water Authority
215-699-4836
www.nwwater.com

Ambler Water
215-646-1000
www.boroughhofambler.com

Lower Gwynedd Sewer Billing
Bucks County Water and Sewer
215-343-2538
www.bcwsa.net

Comcast Xfinity Customer Service
1-800-Xfinity
www.xfinity.com
Verizon Residential Customer Service
1-800-Verizon
www.verizon.com

Republic Services
215-723-0400
www.republicservices.com

PENNDOT
215-345-6060
Report a pothole 1-800-FIXROAD
www.penndot.pa.gov

Horsham Water Authority
215-672-8011
www.horshamwater-sewer.com

County, State and Federal Offices

Congresswoman Madeline Dean
115 E. Glenside Ave #1
Glenside, PA 19038
215-884-4300
www.dean.house.gov/offices

PA Senator Maria Collett
1035 Virginia Drive Suite 201
Fort Washington, PA 19034
215-368-1429
www.senatorcollett.com

PA Representative Liz Hanbidge
1098 W. Skippack Pike
Blue Bell, PA 19422
610-277-3230
www.pahouse.com/Hanbidge/

PA Representative Melissa Cerrato
605 Horsham Road
Horsham, PA 19044-1207
267-282-6695
<https://pahouse.com/cerrato/>

Montgomery County
P.O. Box 311
Norristown, PA 19401
610-278-3000
www.montgomerycountypa.gov

LOWER GWYNEDD POLICE AND COMMUNITY RESPONSE UNIT.....

2025 Touch A Truck

The LGPD Touch a Truck event is back by popular demand and will be held on May 17. Mark your calendar for a day filled with excitement as you and your family can explore and interact with a variety of trucks and vehicles. It's a great event for kids and adults alike. Don't miss out on this fun experience!



Upcoming Community Events

1. **License Plate Restoration Event** with State Rep Hanbidge's Office – Saturday, April 5, 10 am -noon at Temple Ambler Campus. Go to <https://www.pahouse.com/hanbidges> for more information. Take advantage of this chance to give your plates a fresh look!
2. **Kona with Cops - Date: Summer TBD** Enjoy a refreshing Kona with Cops event during the spring or summer season. It's a fun and relaxed way to interact with local law enforcement officers while enjoying a delicious Kona water ice. Stay tuned for more details on the exact date and location.
3. **The police department is partnering with the Wissahickon Valley Boys and Girls Club** (240 Maple Ave Ambler, PA 19002) and to host monthly events between the kids and police to foster relationships. <https://www.npvclub.org/>
4. Sgt Henry and Officer Sharkey, from the police department's Community Response Unit will again assist the Pennsylvania State Police with their Troop K Camp Cadet. The Camp provides insight into police training and the overall expectation of being a police officer. **Camp registration at Troop K Camp Cadet – State Police Camp Cadet.**

CRIMEWATCH

We encourage residents to sign up for Crimewatch. Crimewatch allows residents to stay informed about local crime activities, submit tips, participate in programs that the Police Department has to offer and receive alerts or updates for events. It's an effective way to increase community engagement and promote participation in maintaining neighborhood safety.



To sign up for police programs offered by the Lower Gwynedd, (such as **alarm and camera registry, vacation checks, and do not solicit list**), follow these steps:

Visit www.lowergwyneddpolice.org and navigate to the "Police Services" or "Community Programs" section. Please review the information provided about each program to understand their purpose and requirements. Follow the instructions to sign up for each program. This may involve filling out an online form or contacting Lower Gwynedd Police directly.

It's important to note that the specific process and requirements may vary for each program and organization.

If you have any questions, don't hesitate to contact Sgt William Henry of the Community Response Unit.

The Community Response Unit is always ready to participate in other community events when requested. They are dedicated to serving and supporting the community in any way possible.

Thefts from Motor Vehicles: A National Trend

Across the nation, there has been an uptick in thefts from vehicles, and Lower Gwynedd Township is no exception. Thefts from vehicles occur when a criminal breaks into or opens an **unlocked** vehicle to steal the contents. Thefts from vehicles had often been committed as a "crime of opportunity" in the past. However, due to the potential high yield with little work, sophisticated rings are targeting neighborhoods in the middle of the night. Here are some tips to help safeguard your property.

- Remove all personal belongings from the car or keep them out of sight
- Park in a well-lit area or near other cars
- Always lock your doors and roll all windows up
- Invest in surveillance cameras such as Ring, Arlo, or Blink for your driveway
- Trust your instincts and call the Lower Gwynedd Police Department if you hear or see anything suspicious

LAND DEVELOPMENT & SUBDIVISION

Below is a summary of the various land development and subdivision projects currently being reviewed, approved, or under construction within Lower Gwynedd Township at the time of this publication was prepared, January 2025.



Preliminary Review

- **Whitefield Subdivision (#24-04LD):** A-Residential: Location-1348 Sumneytown Pike; Applicant-Genterra Corporation; Summary- The applicant proposes a 10-lot residential subdivision of a 15.7-acre parcel, including demolition of the existing buildings except for the existing historic home and creating 9 new building lots. As proposed, eight of the lots will have access off an extension of Forrest Drive with a cul-de-sac and the remaining two lots will be accessed from Evans Road. *On hold as applicant revises the plan.*
- **Apartment & Retail Amendment at Spring House Corporate Center** Spring House Corporate Center; Location 321 Norristown Road; Applicant BET Investments; applicant is requesting an amendment to rezone the property from D-1 Special Use to MF3 multi-family mixed use to allow a new apartment building to replace a mostly vacant office building and retail to be added along Norristown Road. At the time of this publication an open house community conversation was scheduled for January 30th. The Board of Supervisors planned to decide afterwards whether or how to proceed with the proposed zoning ordinance amendment. Check the Township's website for updates.

Approved/Under Construction

- **Spring House Estates- Acts Community:** (Multi-family zoning district) MF3-B; Location-728 Norristown Road; Applicant-Acts Retirement Community; Summary-Applicant will construct two separate building additions, install additional parking stalls, and reconstruct the entrance/drop-off area. Additional improvements include a courtyard area including walkways, site lighting and landscaping, and a modification to an existing stormwater basin. *Approved.*
- **Janssen Permanent Parking Lot:** (F-1 Limited Industrial zoning district); Location-1400 McKean Road; Applicant-Janssen Pharmaceutical R&D; Summary-Applicant to install permanent parking lot. *Under Construction.*
- **Spring House Innovation Park (SHIP)-** Building 14 Parking Lot and Electric Substation (D-1 Special use district); Location-727 Norristown Road (SHIP); Applicant-Beacon Capital Partners; Summary- Applicant is constructing a 1,942 square foot electrical substation and adding a parking lot at Building 14 on their campus. *Under construction.*
- **Gwynedd Mercy University Francis M. Maguire Healthcare Innovation Center:** (Institutional; Zoning Overlay District Location)-1325 Sumneytown Pike; Applicant-Gwynedd Mercy University; Summary-Applicant is constructing a 70,000 square foot two-story nursing center and associated improvements. *Under Construction.*

Old Bethlehem Pike Bridge Replacement & Streambank Restoration Projects

Lower Gwynedd Township will construct the Old Bethlehem Pike Bridge Replacement & Streambank Restoration projects in 2025. The Board of Supervisors awarded the bid for the project to G&B Construction, Inc., at their meeting on January 6, 2025. The bridge project includes the full replacement of an existing culvert on Old Bethlehem Pike (the roadway that runs behind the Township Building). After a series of engineering assessments, the bridge was found to be structurally compromised, and a weight restriction was imposed prohibiting large vehicles from crossing it. The compromised existing single-span stone masonry arch bridge will be replaced with a pre-cast concrete arch bridge with textured pattern concrete walls. In addition to the bridge, the Township plans to move forward simultaneously with a streambank restoration project in the same location.

The proposed streambank stabilization project will repair eroded streambanks within Willow Run, a tributary to Wissahickon Creek, on both sides of Old Bethlehem Pike. The Wissahickon Creek suffers from what is known as “urban creek syndrome”, which means it has flash floods, elevated concentrations of pollutants, impaired habitat, and reduced species biodiversity due to suburban development. This project will re-establish and stabilize the bank and restore the area to its natural function. We anticipate that the restoration and enhancement will reduce the amount of sediment and other pollutant entering the stream and improve water quality throughout the watershed. We also anticipate that the restoration and enhancement will reduce the amount of sediment and other pollutants entering the stream and improve water quality throughout the watershed.

The projects are funded through separate grants. The bridge will be funded in part through the PA Department of Community and Economic Development (DCED) Local Share Account Grant, and the streambank restoration will be funded through DCED's Watershed Restoration and Protection Program Grant and Montgomery County ARPA Funds secured through the Wissahickon Clean Water Partnership.

Stormwater Update

In other stormwater news, the Township has completed the Houston Creek Flood Study and is moving forward with implementing recommendations that came from the study. This includes road reprofiling, curb extension, and the removal/replacement of a driveway culvert. We also were awarded a PA Flood Mitigation grant in the amount of \$27,200 to develop a flood study for the Penllyn neighborhood, and will begin work on a riparian enhancement and streambank restoration project in partnership with Janssen on McKean Road.

2024 Grants \$5,362,400



\$1,964,300

Spring House Intersection

PennDot
Multimodal

Bethlehem Pike Sidewalk

MontCo 2040

\$278,700

\$786,000

Old Bethlehem Pike Bridge

PA Local Share

Old Bethlehem Pike Streambank

PA Watershed RPP |
MontCo ARPA

\$100,000

\$59,000

\$6,000

Pollinator Gardens (Oxford and Pen-Ambler Parks)

PECO Green
Region Award

Welsh Rd Signal Upgrades

PA Green Light Go

\$325,000

\$830,000

Ingersoll Park Upgrades

PA Eco Dev & Comm
Dev | PA LSA Water &
Sewer

\$59,000

\$704,400

Penllyn Station Trail

MontCo 2040

\$250,000





Going Green AWARD

Recognize Someone for Doing Right!

The Board of Supervisors and Environmental Advisory Council presented the 2024 Going Green Award to Foulkeways at Gwynedd for their environmental stewardship actions in Energy, Water, Land, Waste Minimization, and Community Outreach. In addition, Paige Menton, Founder and Executive Director of Journeywork, received the Honorable Mention Award for her dedication to sustainability, environmental stewardship and community involvement.

The Environmental Advisory Council meets monthly at the Township Building and looks forward to applications for the 2025 Going Green Award.



Journeyworks



Foulkeways

WISSAHICKON HIGH SCHOOL NATIVE GARDEN

Under the leadership of Master Watershed Steward and Whitpain Township’s Environmental Advisory Council (EAC) member Erin Crump, members of Whitpain Township’s EAC worked alongside Brenda Doll, a member of the Lower Gwynedd EAC, the Wissahickon High School (WHS) Outdoor Club and some community volunteers to revitalize outdoor areas adjacent to the Wissahickon High School’s Natatorium and circle gym entrance.

There were over 250 native plants each designed to bloom from Spring until Fall. Native species are the best match for our region’s growing conditions, requiring limited care once established. They also attract the greatest number of local pollinators, such as native honeybees, butterflies, birds, and bats.

This was a joint project with the three EACs that have students in the Wissahickon School District (Ambler, Lower Gwynedd and Whitpain), WHS Outdoor Club students, and Penn State Master Watershed Stewards (MWS). The effort was funded by both Whitpain and Lower Gwynedd EACs, Weaver’s Way Environmental Committee, Penn State MWS and the WHS Home and School Association



How can we make recycling better together?

Please recycle only the items below.



- ✓ **PLASTICS**
Recycle plastics #1 thru #7. Look on the bottom of containers for a number inside the recycling arrows.



- ✓ **METAL CANS, ALUMINUM FOIL, ALUMINUM FOIL PANS**
Recycle all food and beverage metal cans - steel, tin, bi-metal and aluminum.



- ✓ **CARDBOARD, NEWSPAPER AND MAGAZINES**
You can also include newspaper inserts, catalogs, paperback books, phone books & brochures.



- ✓ **PAPER FOOD CONTAINERS**
Recycle food boxes including: juice boxes, egg, ice cream & milk cartons, and cereal & pasta boxes.



- ✓ **PAPER**
Recycle envelopes, office paper, junk mail, greeting cards & file folders. Shredded paper should be put in a paper bag.

DO NOT RECYCLE:

- Plastic Bags
- Plastic Food Wrappers
- Plastic without Numbers
- Greasy Food Containers
- Food or Liquid Waste
- Yard Waste
- Construction Debris
- Scrap Metal
- Hazardous Waste
- Electronics
- Cables or Batteries
- Diapers
- Tissue
- Bio-hazardous Waste
- Light Bulbs
- Ceramics
- Dishes or Mirrors
- Hoses
- Toys
- Clothes
- Shoes
- Tools
- Plastic Straws
- Styrofoam
- To-Go Lids
- Holiday Decorations
- Hardback Books

For more information visit
RepublicServices.com

©2018 Republic Services, Inc.



We'll handle it from here.®

SMALL ANIMALS AND DEER

We often receive calls regarding dead animals in yards and along roadways. Where the animal is located and the type of animal determines who you should call.

PENNDOT will clear **deer** carcasses from state roads. These roads would include...

Bethlehem Pike	Tennis Avenue	Gypsy Hill Road
Norristown Road	Dekalb Pike	Plymouth Road
Evans Road	Pen Ambler Road	Welsh Road

You can call PENNDOT at 610-275-2368 to report the deer or report it at customer-care.penndot.gov

The Pennsylvania Game Commission retrieves **deer** from all remaining township and county roads. You can call them at 610-926-3136.

For assistance removing small critters in your yard, such as foxes, skunks, and raccoons, you will need to contact a private critter control business.

HOW TO MANAGE DEER DAMAGE

Yikes! The deer are everywhere in Lower Gwynedd. According to Penn State University wildlife specialist, Dr. Gary San Julian, 5 male and 5 female deer can produce up to 200 offspring in 5 years. How can township residents deter the deer? Here are some ideas:

1. Fence them out.

For small spaces at least 6 feet tall, for wooded areas at least 7 feet tall and for open grass or fields at least 8 feet tall fences. Some gardeners have had luck stringing a single strand of heavy duty fishing line between trees or posts at 2-3 feet off the ground, which may confuse the deer as they bump into the line.

2. Use deer resistant plants. (Remember, nothing is deer-proof, only deer resistant.)

Perennials- ajuga, amsonia, anise hyssop, artemisia, balloon flowers, beebalm, butterfly weed, bleeding heart, campanula, catmint, coreopsis, euphorbia, ferns, foxglove, goldenrod, hardy geraniums, hellebores, iris, lady's mantle, lamb's ear, lamium, lavender, flowering onions, meadow rue, monkshood, montauk daisy, ornamental grasses, peonies, Russian sage, salvia, sweet woodruff, yarrow.

Annuals- ageratum, angelonia, begonia, bidens, calibrachoa, cleome, geraniums, gomphrena, lantana, lobelia, marigolds, ornamental peppers, pentas, salvia, snapdragons, verbena.

Evergreens- boxwood, cotoneaster, leucothoe, falsecypress, Japanese umbrella pine, nandina, Oregon grapeholly, pieris, pines, spruce.

Shrubs- bayberry, beautybush, caryopteris, daphne, abelia, kerria, potentilla, pyracantha, spirea, st. johnswort, sumac, Virginia sweetspire.

Trees- beech, birch, goldenrain tree, hawthorn, horsechestnut, little-leaf linden, parrotia, red oak, serviceberry, stewartia, yellowwood, zelkova.

3. Use deer repellants.

Plantskydd, Bobbex, Deer-Away, Deer Off, Liquid Fence and Deer Scram. These repellants must be applied to ALL new growth on each plant...which means checking for new growth frequently during the early growing season. Remember to reapply after rain.

CODE ENFORCEMENT

Code enforcement is vital for maintaining Lower Gwynedd Township's safety, health, and quality of life. Ensuring buildings meet safety standards reduces the risk of accidents and creates a secure environment for everyone. Health and sanitation regulations help keep our community clean and disease-free, while property maintenance codes preserve property values and enhance the aesthetic appeal of our neighborhoods. Fair and consistent enforcement promotes equity and fosters community pride. Together, these efforts contribute to a vibrant, safe, and welcoming community for all residents.

The Township has added staff to more effectively manage code enforcement. For years when we received a complaint about a possible violation, the Township contacted the property owner via phone, email or an in-person visit. This step will not change. We prefer to take this cooperative approach, as most property owners quickly address the situation. However, the new staff gives us the resources to stay on more difficult situations where there is a code violation that presents a safety risk or negatively affects properties that the property owner refuses to resolve. In that case, we will issue a citation and go through the formal and time-consuming process that ultimately may be decided by a Magisterial District Judge. Our hope is that the citation process will continue to be an uncommon last resort, but we are now better prepared to utilize this tool if needed.

PARKS AND RECREATION



MONTGOMERY COUNTY
SENIOR GAMES

SAVE THE DATE!

May 5- 9, 2025

Online Registration ONLY, Please visit,
www.montcoseniorgames.com

For Help updating your account,
email MONTCOSENIORGAMES@gmail.com
or call 215-659-3100 x1038



SAVE THE DATE
LOWER GWYNEDD
Fall Fest
09-13-25
HOUSTON ROAD

MUSIC | FOOD
AMUSEMENTS AND MORE
QUESTIONS?
CONTACT 215-646-5302 OR
CONTACTUS@LOWERGWYNEDD.ORG

PARKS AND RECREATION

LOWER GWYNEDD TOWNSHIP SPECIAL EVENT NOTIFICATION

Lower Gwynedd Township is requesting that residents, businesses and event planners who are planning any event complete the Townships Special Event Notification Form. Any event with the potential to increase traffic or pedestrian flow, such as 5k runs, walks, bike races, parades, block parties, or church events, should be reported to the Township.

This form is key for coordinating township and first responder personnel, who might be needed for the event, including police, fire, medical, and public works. By submitting the Special Event Notification Form, event planners help ensure that necessary resources are in place, the event follows Township policies, and necessary personnel are available. This form can be found on our website at lowergwynedd.org.

A map of the site and/or route MUST be submitted with the notification. If Township services are requested, event organizers must submit notification no later than 45 days prior to the event.

Event Organizer Information

Applicants Name:		Applicants Address:	
Cellphone:		Email:	
Day of Contact:		Day of Phone:	
Event Name:		Event Location:	
Event Date:		Estimated Number of Attendees:	
Setup Date:		Setup Time:	
Event Start Time:		Event End Time:	
Breakdown Concludes:			

Dog Ordinance

Just a reminder that Lower Gwynedd Township has an ordinance that specifies letting dogs run loose without a leash is prohibited. All dogs must be on a leash of no more than ten feet when on streets, public grounds or property (see ordinance below). This includes all parks and ball fields.

§ 620.02 Dog regulations.

[Ord. 77. Passed 8-17-1964; Ord. 407. Passed 2-18-2003]

(a) Dogs at Large Prohibited. [Amended 8-23-2016 by Ord. No. 509]

(1) As used in this Section 620.02, the term "at large" shall refer to any dog that is not restrained by the dog's owner or keeper with a leash having a length of not more than 10 feet.

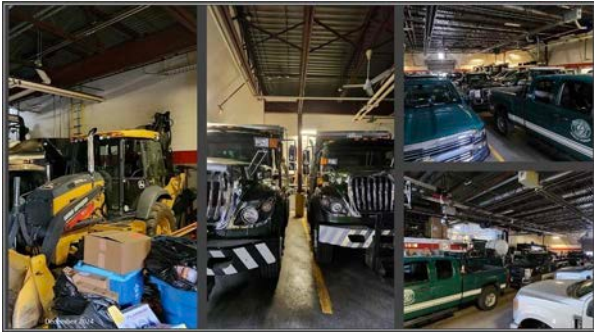
(2) It shall be unlawful for the owner or keeper of any dog, licensed or unlicensed, to permit such dog to run at large over the streets, public grounds or property, or upon the private property of anyone other than the owner or person having custody of the dog or of the property of anyone who has consented to the dog being at large on their property. The owner or keeper of the dog must be of appropriate age and discretion to properly control the actions of the dog.



NEW PUBLIC WORKS FACILITY

The Township's Public Works Department serves the community in a wide variety of ways: repairing and plowing roads, maintaining sanitary sewer and stormwater systems, taking care of parks and trails, cleaning up after storms, maintaining vehicles, and by providing many other services. Although they maintain many critical aspects of the Township, their facilities for storing and maintaining equipment are inefficient, overcrowded, and outdated:

- Inefficient: Equipment and materials are stored at 5 locations throughout the Township. Moving between sites is estimated to take 1.5 hours/day, costing the equivalent of 10 weeks of work for one person each year.
- Crowded: There is insufficient room in the existing facilities; some equipment is stored outdoors. Space is so limited that the Township could not accommodate a recent Police Department requirement for onsite locked storage.
- Outdated: The existing PW facilities require significant investments in maintenance and upgrades.



This is why, for the last several years, the Township has been working on a plan to build a new centralized facility for Public Works operations. The first major step in the project came, with the release of a strategic plan that demonstrated the overall space and functional needs of the department. The existing Public Works facilities were analyzed, and the team assembling the plan took an inventory of all existing and planned equipment and space needs for the department. The space needs include both room for storage of equipment, as well as space for vehicle circulation through any new facility. The plan showed that approximately 10 acres would be needed to accommodate the department on a single site.

In 2024, the Township took the next step toward making the new facility a reality, by hiring an architect to conduct a Feasibility and Needs Assessment. This study determined, at a high level, the optimal layout to meet the current and future needs of the Public Works department. The Assessment created rough floor plans to show how the building(s) could be designed to incorporate the various storage and functional needs that were documented in the earlier strategic plan. In addition to the layout, the assessment showed how the facility could be used as a backup for Township operations in case of an emergency at the existing Township administration building. With a rough layout determined, properties that the Township already owned were analyzed for suitability, but none could meet the needs. The Township has therefore acquired a portion of 1201 Sumneytown Pike, behind Spring House Village Shopping Center.

The Township is not evaluating proposals from consultants to design the new facility. More information will be available when the team is in place.

TRASH AND RECYCLING

Spring Leaf/Yard Waste Collection Dates:

Lower Gwynedd Township's contracted hauler, Republic Services, provides curbside leaf/yard waste collection in the Spring and Fall. The current contract provides for eight collections dates, two in the Spring and six in the Fall. The confirmed dates for this Spring are Saturday, April 12th and Saturday May 10th. All leaf and yard waste must be put in biodegradable bags and placed curbside by 6am on the day of pick-up. There is a limit of eight bags per pick-up.

Montgomery County Recycling

Montgomery County will host household hazardous waste collection events in 2025. At the time of this publication the event dates have not yet been released. Please refer to the link below to see if the dates are available yet. For additional information or to register for an event visit www.MontcoPARecycles.org or call the recycling hotline at 610-278-3618.

Waste Hauler Contract Ends in 2025:

The Township's contract with Republic Services for trash and recycling will expire on October 31, 2025. Lower Gwynedd is a single-hauler municipality, meaning the Township selects the hauler for residential trash and recycling in an effort to get the best price and minimize the inconvenience from trash and recycling collection. We are required to go out to public bid and select the lowest qualified bidder when awarding a contract. We will begin this bidding process for trash and recycling this summer. More information will be circulated as we begin this process.

SIDEWALKS & TRAILS STRATEGIC PLAN

The Township is developing a comprehensive sidewalks and trails plan for the Township. The goal is to create a map that will guide decisions related to sidewalk and trail placement in Township projects and land development applications.

The project began by updating documentation of the existing network of sidewalks and trails across the Township. The network is now being analyzed to see how well it connects to “community nodes,” locations that serve as destinations in the Township, like schools, parks, religious facilities, and commercial corridors.

With an updated map of the existing network and community nodes, the project team will look for gaps to determine which areas should be prioritized for the addition of future sidewalks and trails.

The analysis will also include a review of the Township’s Subdivision and Land Development Ordinance, as well as the Zoning Ordinance, which plays a significant role in determining when and where the walking network may be expanded.

Residents who are interested in providing input to the process should check the website, social media and e-newsletter for future project updates.



COMP PLAN UPDATE

The Montgomery County Planning Commission (MCPC) and a steering committee of Township officials and community volunteers have been working on the revision of the Lower Gwynedd Township Comprehensive Plan for the past year and a half. We're rounding the corner and are in the home stretch. The comprehensive plan is a long-range planning document providing a future growth and development guide. We've been collecting input through steering committee meetings and public outreach while applying sound planning principles to identify the community vision that will guide the plan's recommendations and implementation strategies. The plan looks at a variety of topics including housing, demographic trends, infrastructure, transportation, and current land use to name a few. Through public engagement we've learned that top priorities include walkability, maintaining parks and recreation, redeveloping underutilized commercial properties, beautifying existing commercial areas, and improving road safety and traffic issues. A few of the takeaways gathered through these same channels are that the plan should include strategies to promote walkability, environmental stewardship, opportunities for small-scale retail and commercial, and provide a balance between creating new housing opportunities for growth in specific areas while maintaining the scale and character of established neighborhoods.

These are the general next steps for the comprehensive plan:

1. Winter – the steering committee will review a draft implementation plan (recommendations and action steps), future land use map, and high-level design ideas for Bethlehem Pike
2. Spring – based on the feedback, MCPC will finalize the recommendations, and the complete comprehensive draft plan will be ready for the steering committee to review
3. Spring/Summer – The draft comprehensive plan will be available for public review and comment, the Lower Gwynedd Township Planning Commission will review the draft at public meetings and, when they are ready, recommend it to the Board of Supervisors for approval.

To view a summary slideshow with additional information and details regarding the comprehensive plan please visit our website. [Comprehensive Plan Revision | Lower Gwynedd Township](#)

FRIENDLY REMINDERS FROM THE TAX COLLECTOR

Visit www.lowergwyneddtax.org in order to:

- Download copies of your PAID tax bill
- Print your CURRENT tax bill
- Pay online
- Access important links and forms

March 1st County/Township real estate tax bills will be mailed. April 30th is the last day for the discount period. On the back of your bill will be extra in-person hours.

If paying with a check from your bank's online bill pay, please send payment at least 2 weeks in advance of deadlines. The envelopes do not have a USPS postmark and you run the risk of missing the deadline.

Interim tax bills are NOT sent to your mortgage company. If your mortgage company pays your real estate taxes, please forward interim tax bills. These are bills you may receive in addition to your two annual tax bills due to home renovations, etc.

PA Property Tax/Rent Rebate Application has changes for 2024:

- Maximum standard rebate increasing to \$1,000
- Income cap for homeowner increased to \$45,000
- Income cap for renters increased to \$45,000

Rebate applications will become available in mid-January through the PA Department of Revenue. To apply or to see if you qualify, visit www.revenue.pa.gov.

If you have any questions or concerns, please reach out by email (taxcollector@lowergwynedd.org) or call 267-460-1891.

Thank you,

Natalie Cormier

INGERSOLL HOUSE

Known by more than one name, Spring House Farm/ The Ingersoll Estate on Old Bethlehem Pike (behind the Township Building) is one of the oldest standing structures in the township. Believed to be built in the early 1700's atop an ancient spring tht still flows to this day, the Ingersoll House and Barn were originally purchased by the Township with the Spring House Farms neighborhood were developed in 2004. While the Township has maintained the basic structure and grounds of the property since then, no one could come up with a purpose for the house that was respectful of neighbors and suitable for grant funding. On July 29, 2024, the Board approved the sale of the property at a public auction. The new homeowners intend to restore the property, and their work must comply with the Historic Resource Protection Standards.



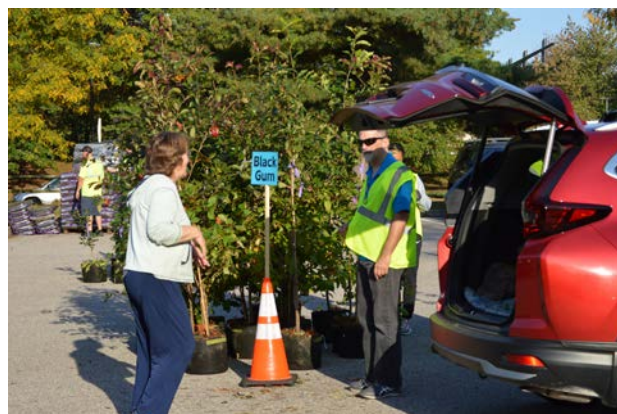
LOWER GWYNEDD TOWNSHIP ANNUAL NATIVE TREE GIVEAWAY



In Fall 2024, 300 native trees (both shade and flowering varieties) were given to residents to plant at their homes. Residents registered ahead of time for the tree giveaway. Thank you to all of the volunteers who helped make this project a success, and all of the residents who received a tree and planted it on their property. If you received one of our trees, just a friendly reminder, make sure to help your young tree reach maturity by keeping it watered in the coming months if we do not receive at least an inch of natural rainfall each week, and protect the tree from deer browsing.



Look for more information in late summer about the date and registration for the 2025 giveaway. Information will be on the Township website, social media and the e-newsletter.



Empty. Clean. Dry.

The new way to recycle.



Reduce. Reuse. Recycle. Anyone growing up in the 1970s, '80s or '90s learned the three Rs of recycling in school. We were taught to recycle everything we could. We added recycling containers to our homes, our offices and classrooms and recycling became a part of our culture.

In the 40 years since recycling was introduced, Americans recycle nearly 87 million tons per year. That means that each of us recycles approximately 1.5 pounds per day! However, the recycling model we all grew up with is changing, and we have to change with it.

Trying to recycle unclean or unrecyclable material increases sorting time and slows down the recycling process, damages the facility's equipment and causes contaminants in the bales of clean recyclables that decreases the value of the items. When this occurs, we have to put the ENTIRE load of recyclables into our landfills due to the contamination.



Empty.



Clean.



Dry.

EMPTY means making sure there is no food or product residue. Make sure all of that goes into the trash or down the drain as part of the EMPTY process.

CLEAN means that empty recyclable containers should be rinsed. So, no mustard in the mustard containers or left over ketchup in the ketchup bottles. If you cannot get a container completely clean, it is best to put it into the trash so as not to contaminate the rest of your recycling material and the overall process.

DRY means letting containers dry before placing in your **All-in-One Recycling™** blue container so that the paper and cardboard does not get wet. Wet or soiled paper and cardboard cannot be recycled.

By practicing Empty. Clean. Dry. with our families, we can ensure the recycling materials leaving our homes are in fact recyclable. Together, we are caretakers of this blue planet. It is worthy of every effort we can make to protect it for our children's children.

Be sure your recyclables are empty, clean and dry before you toss them in the recycling container.

Recyclable Items



Paper

Office paper
Newspaper
Envelopes
Junk mail
Phone books
Brochures
Magazines
Catalogs



Cardboard

File folders
Poster board
Shipping boxes (folded flat)
Frozen food boxes
Cardboard boxes
Milk cartons



Plastic

Water bottles
Take-out containers
Soda bottles
Detergent/containers



Metal

Aluminum beverage cans
Food cans
Steel food containers



Glass

Bottles (clear, green and brown)
Jars

Non-Recyclable Items

Plastic bags or plastic wrap
Aerosol cans
Aluminum foil
Batteries
Food waste

Pizza boxes
Electronic waste
Mirrors or ceramics
Paint
Pesticides

Medication
Styrofoam
Tissue, paper towels and napkins
Syringes and needles



We'll handle it from here.®



LOWER GWYNEDD'S

SHREDDING & E-CYCLE

07 JUNE 2025

EVENT

8 AM TO 11AM

RAIN BARRELS

*Help Conserve Water
and Save Money!*



WHAT EXACTLY IS A RAIN BARREL?

A rain barrel is a system that collects and stores rain water from your roof that would otherwise be lost to runoff and diverted to storm drains, streams, and eventually the Delaware River watershed. It typically is constructed using a reused 55 gallon food grade barrel, a bottom drain, a spigot, an overflow a screen to keep debris and insects out, and a downspout diverter to carry the water into the rain barrel.

A rain barrel is a relatively simple and inexpensive way to capture and store rain water for use at later times. It conveniently sits under residential gutter downspouts from your home, garage, and/or shed.

BENEFITS OF USING A RAIN BARREL

Lawn and garden watering can take up a large percentage of household water use during the summer months. A rain barrel collects water and stores it for when you need it most, during periods of drought. A rain barrel provides an ample supply of FREE water for flowers, gardens, lawns, and even car washing.

Conserving water helps protect the environment, saves energy (decreased demand for treated tap water or well water) and decreased the impact of runoff to streams and the Delaware River. By installing a rain barrel, you can help protect the water quality, aquatic species, drinking water quality, and recreation in the Delaware River watershed.

A formula to remember: 1 inch of rain on a 1,000 sq. ft. roof yields 623 gallons of water. Calculate the yield of your roof by multiplying the square footage of your roof by 623 and divide by 1,000.

Make Your Home Your Favorite Place

Harth Builders can improve
the beauty and comfort of
every room in your home —
both inside and out.

HARTH
DESIGN | BUILD | REMODEL

HarthBuilders.com | 215.654.0364

812 N. Bethlehem Pike
Lower Gwynedd, PA

PA #0249 | NJHIC #13VH13529700



ENVIRONMENTAL ADVISORY COUNCIL



BATTERY AND TECHNO TRASH RECYCLING

Did you know that in addition to batteries, the EAC also collects Techno-Trash at our bi-monthly collections? Help us keep more items out of landfills by dropping off CD/DVD/VHS/floppy discs and tapes and their cases, charging cables and other small accessories (computer mice, earbuds, computer or tv cables, adapters). Visit our website for upcoming dates and more specifics about what can be recycled, and how certain batteries need to be prepared before dropping them off.



BIRD TOWN
PENNSYLVANIA

LOWER GWYNEDD BIRD TOWN BIRD WALKS

Lower Gwynedd's Bird Town program offers free guided walks on the second Tuesday of the month through June at parks and preserves throughout the township. Look for upcoming locations and dates in the monthly e-newsletter or the Bird Town section of the township webpage.

You don't have to be a tax expert.

That's our job.

- ✓ Business Advisory Services
- ✓ Tax Services: Business, Individual, Estate & Trust
- ✓ Bookkeeping Services: QuickBooks® Pro Advisors

MCCUSKER ASSOCIATES
CERTIFIED PUBLIC ACCOUNTANTS

Contact us for a free consultation

(215) 643-0100

421 N. Bethlehem Pike
Ambler, PA 19002
mccuskercpa.com

*Be Alert
Be Informed*

Be **READY** **MONTCO**

ReadyMontco is your official source for notifications about emergencies, severe weather, crime alerts and disasters in Montgomery County.

Receive time-sensitive messages wherever you specify - on your home, mobile phone, business phone, email address, text messages, and more!

Sign Up: www.ReadyMontco.org

*ReadyMontco only sends alerts specific to Montgomery County.
Therefore, the address you provide must be located within Montgomery County.*



Powered By
Montgomery County
Department of Public Safety
Ready. For You.

Scan with your
mobile device:










Valleygreen
flowers & gifts

Weddings
 Flowers
 Plants
 Gourmet Foods
 Seasonal Planting
 Prom Flowers

SAME DAY DELIVERY

215-628-3550
 1013 N Bethlehem Pike, Lower Gwynedd, PA
valleygreenflowers.com valleygreenweddings.com



908 North Bethlehem Pike
 Spring House, Pa 19477-0244

215.283.9000

- The area's premier dealer for over 30 years
- We have our own factory trained installers
- We offer a lifetime warranty on installation
- Free "no pressure" in-home estimates

Mention this ad and receive
 a coupon, worth up to \$500 off
 your next purchase!
 Expiration 6/30/2025

www.GoSpringHouse.com

PA LIC# 6172






Live
 MUSICALLY

PASSION + PURPOSE + COMMUNITY

Live the life you love.
 Find out how at
AboutActs.com/LowerGwynedd
 or call (866) 590-2077.



Where Loving-Kindness Lives

Fort Washington Estates
 Gwynedd Estates
 Southampton Estates
 Spring House Estates









THANK YOU!

Lower Gwynedd Township gratefully acknowledges the generosity and support of the businesses and individuals who have placed advertisements in our newsletter. This newsletter has been designed and printed at no cost to you, our residents. We encourage you to patronize these businesses as they play a vital role in the economic stability of our community.

Nelson & Campbell Auto Tags
 Quality Customer Service Since 1992

Full-Service Tag Agency

- Instant Registration • Instant Drivers License Renewals
- Instant Vehicle Title Transfers • Leave With Your Documents

www.NelsonAndCampbellAutoTags.com

215-542-9501

909 N. Bethlehem Pike
 Spring House, PA 19477
 Next to the Sprint House Post Office

PennDOT
 Authorized On-Line Agent
 Complete Notary Services

State & Service
 Fees Apply

Let's
 Brunch

SUNDAYS 10am - 3pm
 Reservations recommended
 Best beignets around!



SPRING HOUSE
 TAVERN
 ESTABLISHED 1719

Lower Gwynedd Township
 Spring House, PA 19477
 Phone: 215-646-5302
 Fax: 215-646-3357
 www.lowergwynedd.org

PRSR STD
 US POSTAGE
 PAID
 HARRISBURG PA
 PERMIT NO 609



SPRING 2024



This Community Newsletter is produced for Lower Gwynedd Township
 by **Hometown Press** • 215.257.1500 • All rights reserved®



To Place An Ad Call Rose Mary At **Hometown Press** • 215-805-2121



Water Heaters • Sump Pumps • Boilers
 Water Treatment & Purification

Third Generation Family Owned!



281 East Butler Avenue • Ambler, PA
 Office: 215-643-1188 • Fax: 215-643-0758

LuskinPlumbing.com

Sewer & Drain Cleaning
 Video Pipeline Inspection
 High Pressure Water Jetting
 Water & Sewer Line Repair/Replacement

PROUD
 to be
 YOUR
HOMETOWN
 UNIVERSITY



96%

of recent graduates were
 employed or in graduate
 school within 6 months

(2024 survey)



gmercyu.edu

Core Values: RESPECT, INTEGRITY, SERVICE, SOCIAL JUSTICE

GA
 GERMANTOWN
 ACADEMY
**Summer
 Camps**



**REGISTRATION OPENS
 JANUARY 2025!**



Cinderella



www.gacamp.org